

**to be
the BEST
LED Street Light**



Innovative solutions

Sustainable performance

Innovative solutions

HOMBO has successfully developed and pushed a series of LED Street Light products into global market. HB-180 led street light, imitate the shape of seagull, with fashionable design, excellent quality, high uniformity, long lifespan over 50,000 hours and environmentally protection, etc., are receiving increasing interest and attention from global strength purchasers.

Sustainable performance

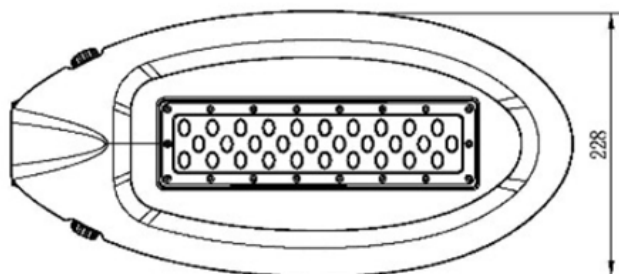
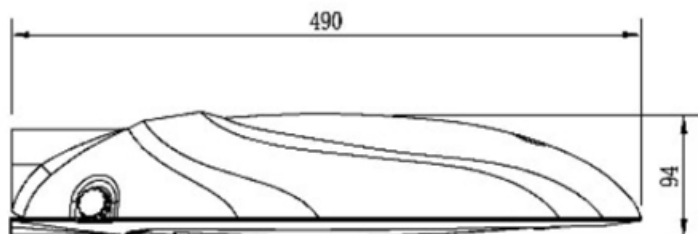
Utilizing HOMBO/ Meanwell /Moso / LED driver, and Philips/souel LEDs, HB-180 led street light provides exceptional energy efficiency.

This luminaire is manufactured with fully recyclable aluminum castings and extrusions that help to protect our environment for years to come. Energy efficiency is enhanced with optional dimming, programmable drivers, and outdoor control systems.



Dimensions

Wattage	Weight		Length		Width		Height	
	lb.	kg.	In.	mm.	In.	mm.	In.	mm.
HB-180-30w	4.44	2.2	19.3	490	9.0	228	3.7	94
HB-180-40w	4.44	2.2	19.3	490	9.0	228	3.7	94
HB-180-50w	4.44	2.2	19.3	490	9.0	228	3.7	94
HB-180-60w	4.44	2.2	19.3	490	9.0	228	3.7	94



Technical Parameter

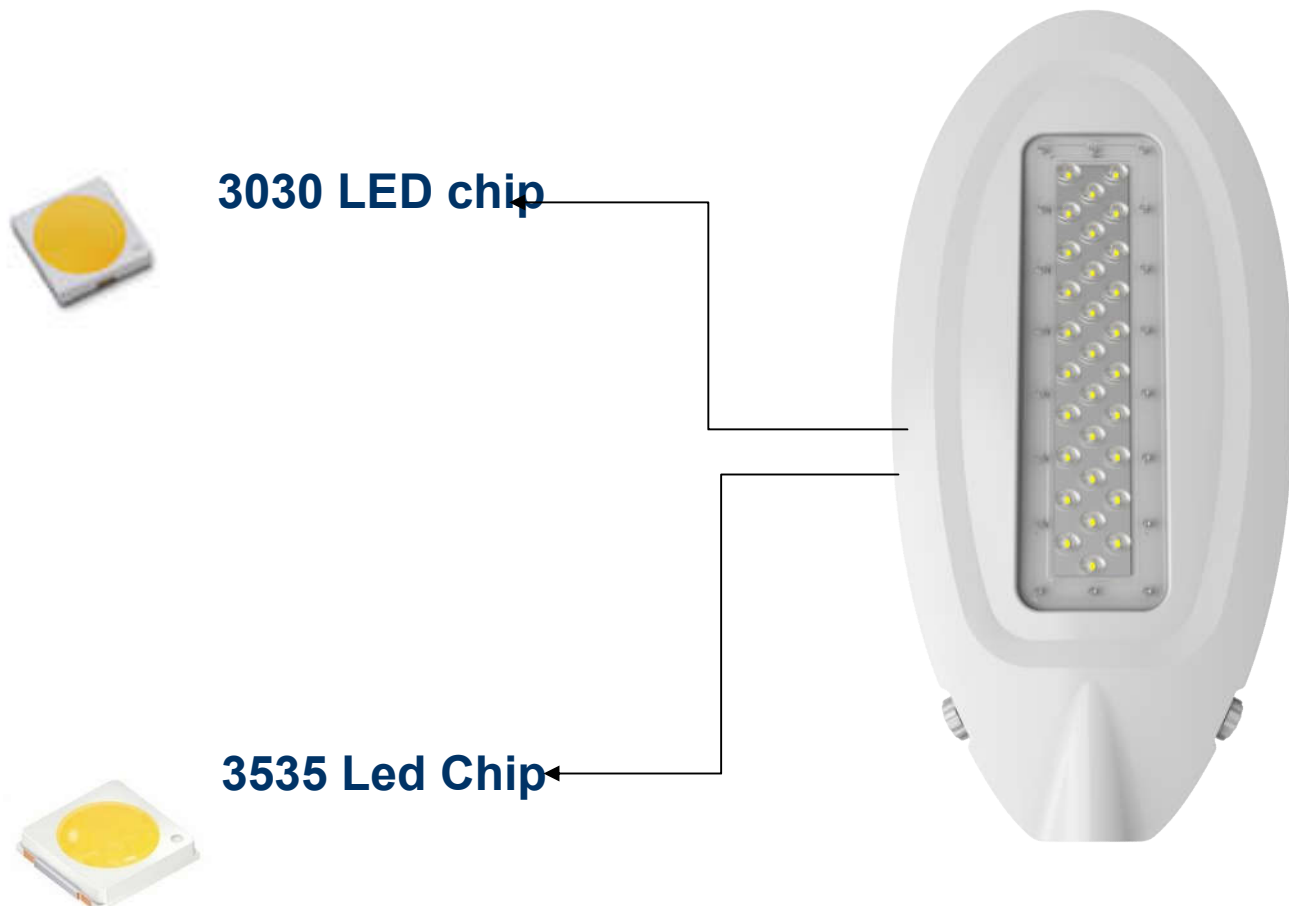
Series No.	Wattage	Input Voltage	Color Temperature	Lumen Efficiency	Color of Housing	Mounting Way	Accessories
HB-180	30w 40w 50w 60w	Normal: 100~240V AC North American: 100~277V AC 480V AC Solar System: 12V DC 24V DC	Cool White: 5000K Day White: 4000K Warm White: 3000K Customized CCT	Normal bright: 140~160 lm/w (chips) @ CRI ≥ 70	Normal : Blue & white Customized color (MOQ ≥ 50 PCS)	Horizontal mounting Adjustable angle 0°	Horizontal mounting with 0°

Electronics

Item No.	Number of LEDs	Lamp Wattage	System Wattage	Max. System Current	LED Current
HB-180-30w	36 PCS	30 W	32 W		
HB-180-40w	36 PCS	40 W	42 W		
HB-180-50w	20PCS	50 W	52 W		
HB-180-60w	20PCS	60 W	62 W		

Upgrade configuration

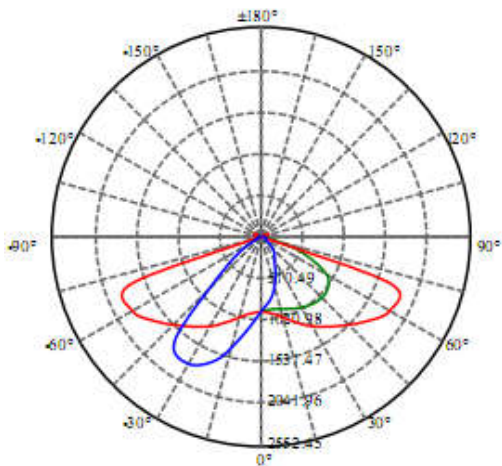
Optional Led Chips



Optional Led Drivers

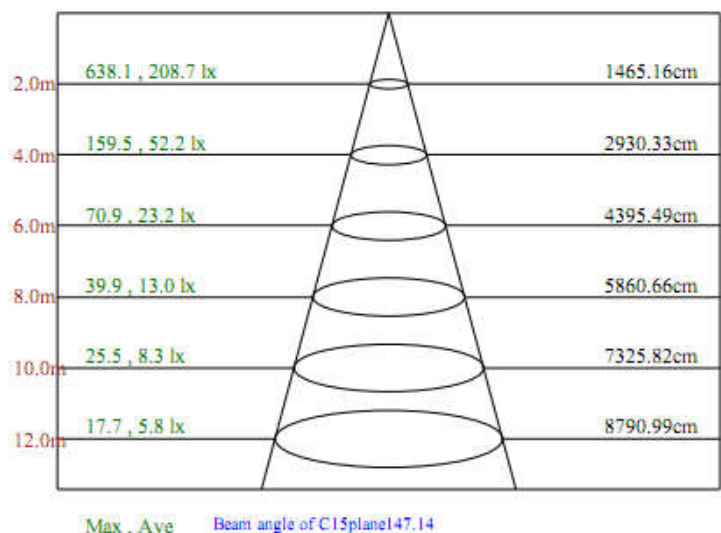
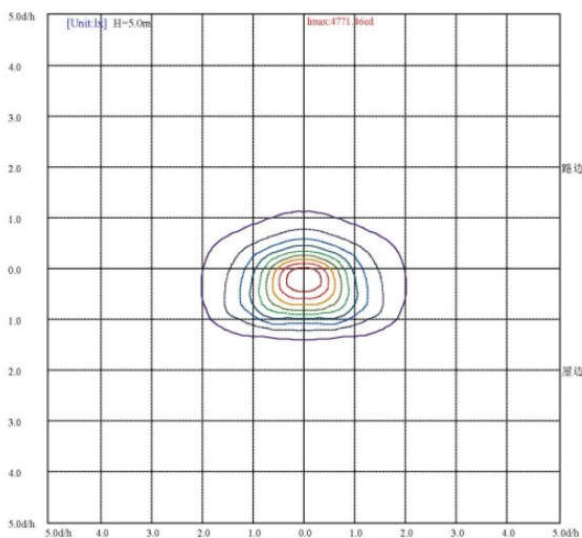
- HB-180 Led street light have enough space to mounting led driver.
- World popular driver brands are optional: Meanwell, MoSo, HOMBO.....

Photo-metric Parameter



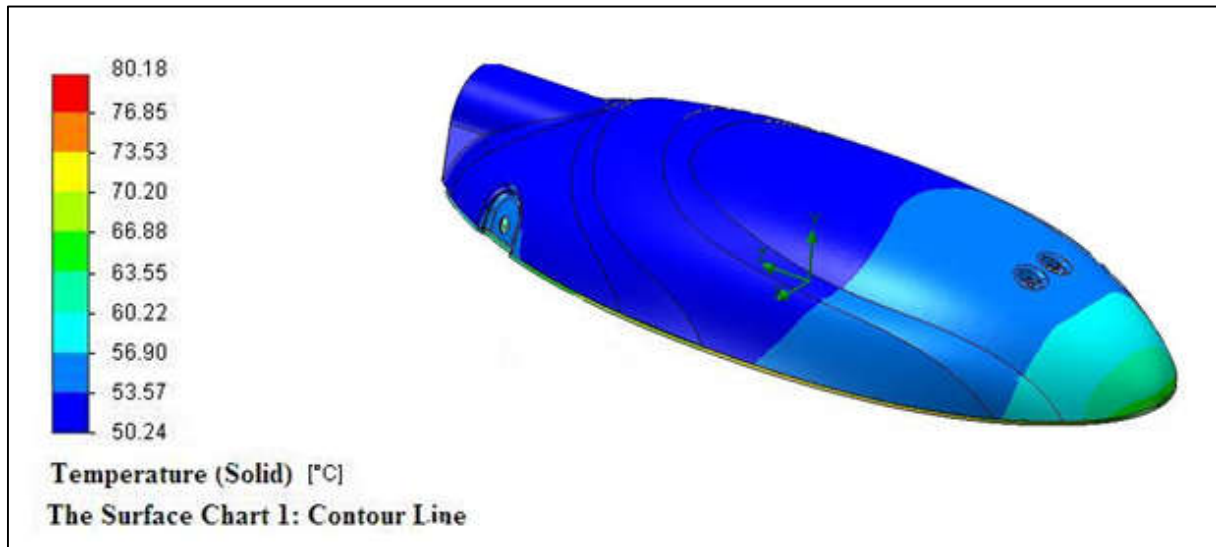
Great photo-metric performance

- beam angle can be 120°~135°, high uniformity
- full consideration of glare and light environment factor

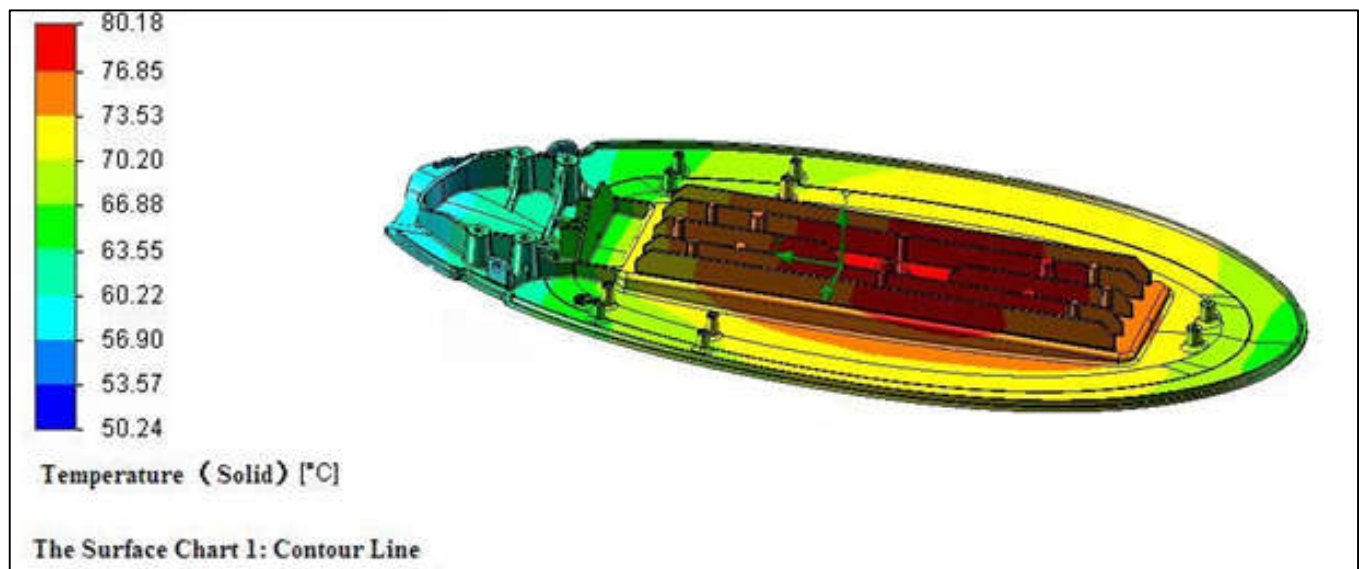


Thermal Management

Top Cover

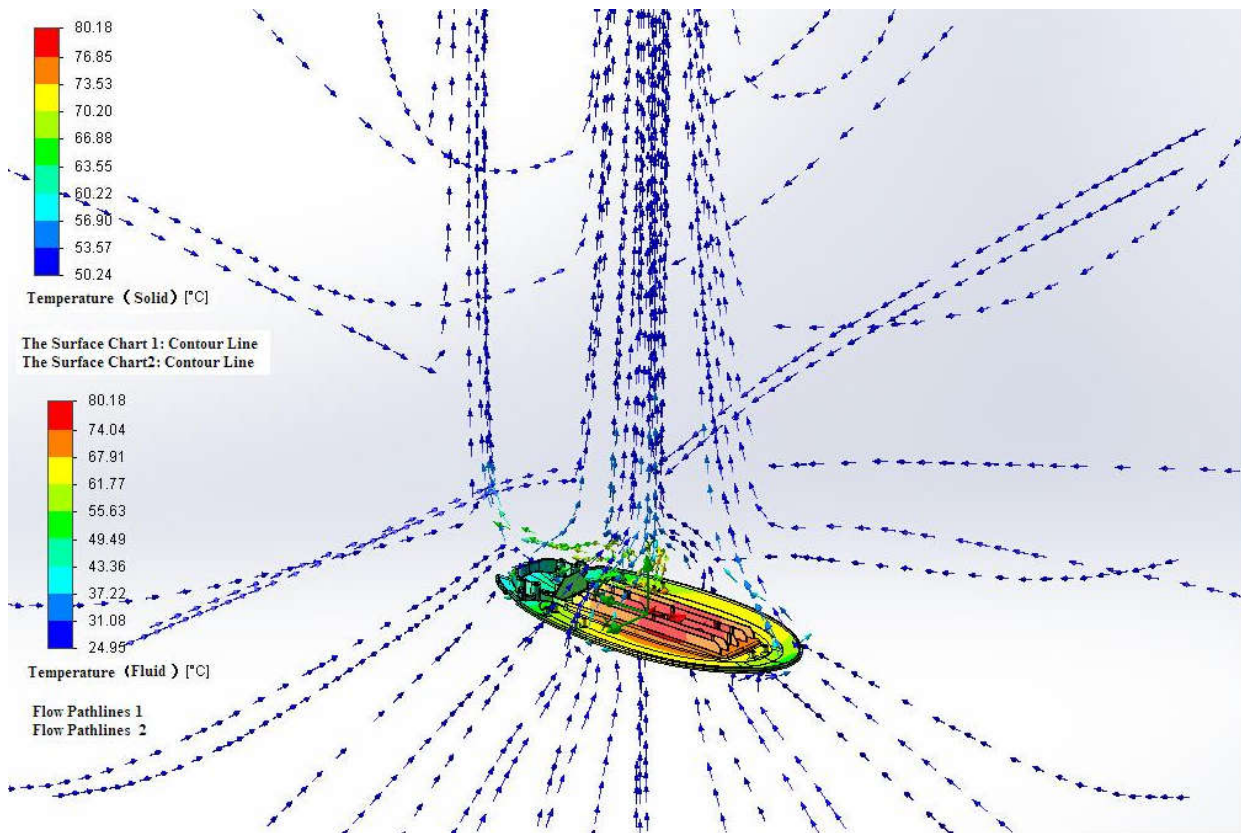
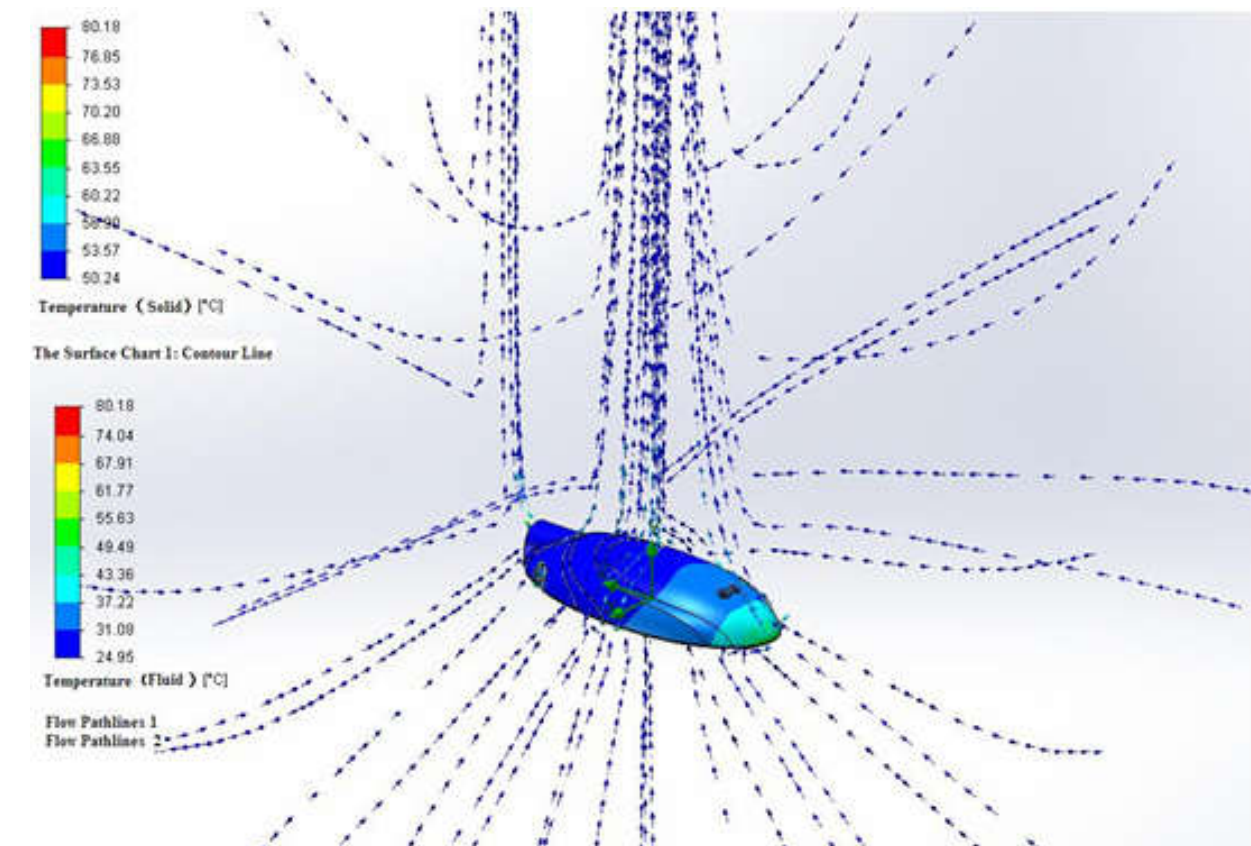


The Power Supply Warehouse



- Sea -Gull shape Design. The whole lamp looks Elegant and modern.
- Integration of aluminum alloy radiator shell, the all housing is like a huge sink, with excellent heating dissipation.
- Obey the air dynamics and fluid mechanics principle, maximum the function of lamp dissipation.
- Use special high quality heat conducting material, push out the lamp heating in shortest time.

Simulation of lamp Heating Dissipation Condition



● Use FLOEFD software to simulate the lamp heat dissipation condition, analyze the construction of lamp heat dissipation, thus to achieve the best effect of heating dissipation.

Mounting Instruction

Tool Maintenance - Free



- Have tools-free maintenance function, Manually twist the screw on the lamp, then you can open or tighten the shell. It is convenient and safe to mount or maintain when aloft work condition.



- Use Clamshell design,
Easy installation and maintenance

Pole Mounting Solutions



- Horizontal Pole mounting, with adjustable angle+8°

- Insert the $\phi 60$ pole into the lamp.
- Install the sheeting and then fix the pole With four M5 screws.

- $\phi 60$ lamp pole

- Sheeting which is used to fix the pole

- Tighten the crews manually.

- Finish the mounting easily

⚠ Warning: When flexible wire is broken, please cut off the power immediately, avoid short circuit. When the outer insulation cable is broken, it should be changed by manufacture, supplier or professional electrician, lest danger occurs!

Smart Control System

SEMS Power line System

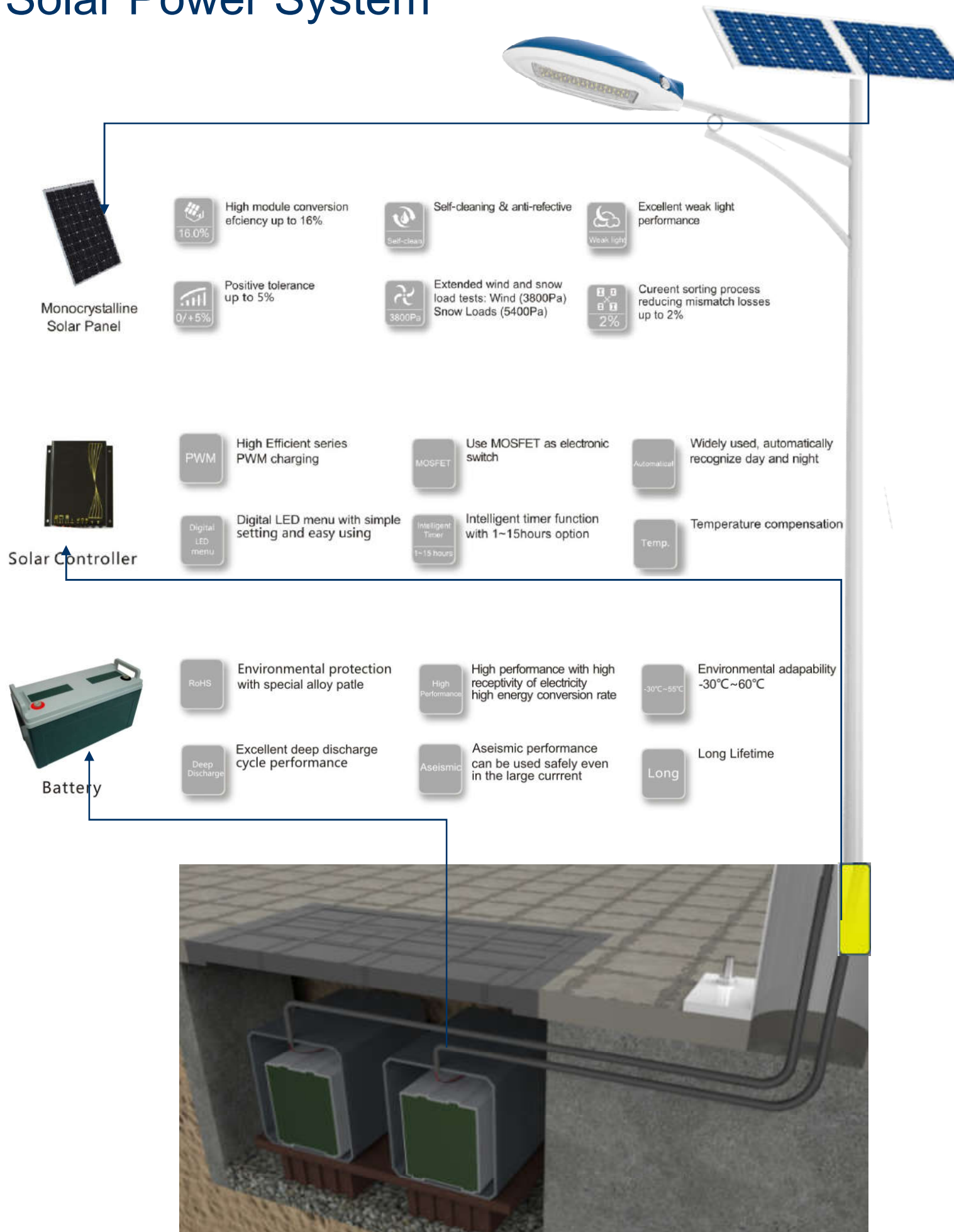
- Lamp metering
- Real time control
- Lamp fault diagnosing
- On / off / dim schedules
- Power line fault diagnosing
- Energy saving reports
- Support video system
- 3 phase power metering
- Support environment sensors
- Work as Smart City platform



SEMS Wireless System

- Lamp metering
- Real time control
- Lamp fault diagnosing
- On / off / dim schedules
- Energy saving reports
- Support video system
- 3 phase power metering
- Support environment sensors
- Work as Smart City platform

Solar Power System



**Light Your City and Village
with Good Service!**



HOMBO Technology Public Limited Company

Add: No. 58, Min An Road, South, Xiaolan Town, Zhongshan City,
Guangdong Province 528415

Tel: 86-760-22831803 Fax: 86-760-22117461

Email: hombo@zshongbao.com

Website: www.homboled.com