

# HOMBO

....HB-188B



to be  
the **BEST**  
**LED Street Light**



HOMBO Technology Public Limited Company

# Innovative solutions

# Sustainable performance

## Innovative solutions

HB-188B was created to help those responsible for lighting our streets and highways succeed in their lighting design goals. Powered by the HOMBO led street light, the featuring innovative thermal management design, the HB-188B offers exceptional performance and value. This versatile luminaire can be tailored to the unique specifications of each project by offering multiple LED boards and wattage options.

## Sustainable performance

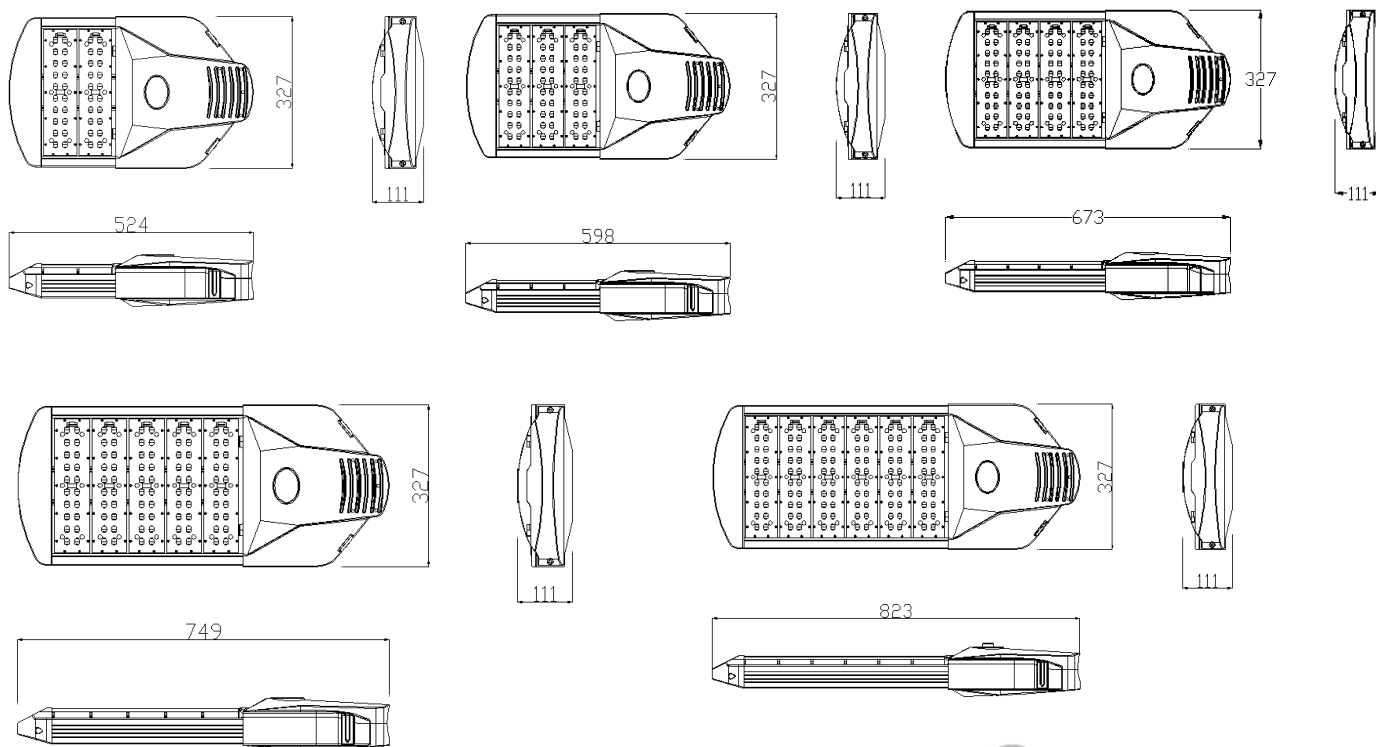
Utilizing Meanwell /Moso /HOMBO LED driver, and souel LEDs, normally we use 3535.the HB-188B provides exceptional energy efficiency.

This luminaire is manufactured with fully recyclable aluminum castings and extrusions that help to protect our environment for years to come. Energy efficiency is enhanced with optional dimming, programmable drivers, and outdoor control systems.



# Dimensions

Wattage	Weight		Length		Width		Height	
	lb.	kg.	In.	mm.	In.	mm.	In.	mm.
HB-188B-01-40w/50W	12.12	5.5	17.7	450	12.9	327	4.4	111
HB-188B-02-60w~100W	13	5.9	20.6	524	12.9	327	4.4	111
HB-188B-03-120w / 150w	14.8	6.7	25.3	598	12.9	327	4.4	111
HB-188B-04-160/180/200w	16.6	7.5	26.4	673	12.9	327	4.4	111
HB-188B-05-240w/280w/300W	18.3	8.3	29.5	749	12.9	327	4.4	111



# Technical Parameter

Series No.	Wattage	Input Voltage	Color Temperature	Lumen Efficiency	Color of Housing	Mounting Way
HB-188B	40w	Normal: 100~240V AC	Cool White: 5000K	Normal bright: 145~160 lm/w (chips)  @ CRI ≥ 70	Normal : Whole Grey  Customized color (MOQ ≥ 50 PCS)	Horizontal mounting with 0~15°
	60w					
	80w					
	90w	North American: 100~277V AC 480V AC	Day White: 4000K			
	120w					
	150w					
	160w	Solar System: 12V DC 24V DC	Warm White: 3000K			
	180w					
	200w					
	240w		Customized CCT			
	280w					
	300w					

## Electronics

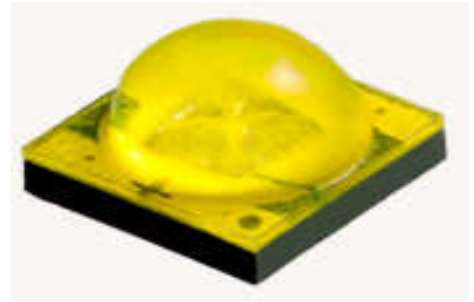
Item No.	Number of LEDs	Lamp Wattage	System Wattage	Max. System Current	LED Current
HB-188B-01-40w	20 PCS	40 W	42 W	0.42 Amp @100V	0.68 Amp @20w
HB-188B-02-60w	40 PCS	60 W	63 W	0.63 Amp @100V	0.95 Amp@30w
HB-188B-02-80w	40 PCS	80 W	84 W	0.84 Amp @100V	1.35 Amp@40w
HB-188B-02-90w	40 PCS	90 W	95 W	0.95 Amp @100V	0.95 Amp@30w
HB-188B-03-120w	60 PCS	120 W	126 W	1.26 Amp @100V	1.35 Amp@40w
HB-188B-03-150w	60 PCS	150 W	156 W	1.5 Amp @100V	1.58 Amp@50w
HB-188B-04-160w	80 PCS	160 W	168 W	1.68 Amp @100V	1.35 Amp@40w
HB-188B-04-180w	80 PCS	180 W	189 W	1.89 Amp @100V	1.35 Amp@40w
HB-188B-04-200w	80 PCS	200 W	210 W	2.10 Amp @100V	1.35 Amp@40w
HB-188B-05-240w	100 PCS	240 W	247 W	2.47 Amp @100V	1.35 Amp@40w
HB-188B-05-280w	100 PCS	280 W	289 W	2.89 Amp @100V	1.35 Amp@40w
HB-188B-05-300w	100 PCS	300 W	309 W	3.09 Amp @100V	1.35 Amp@40w

# LED Chips

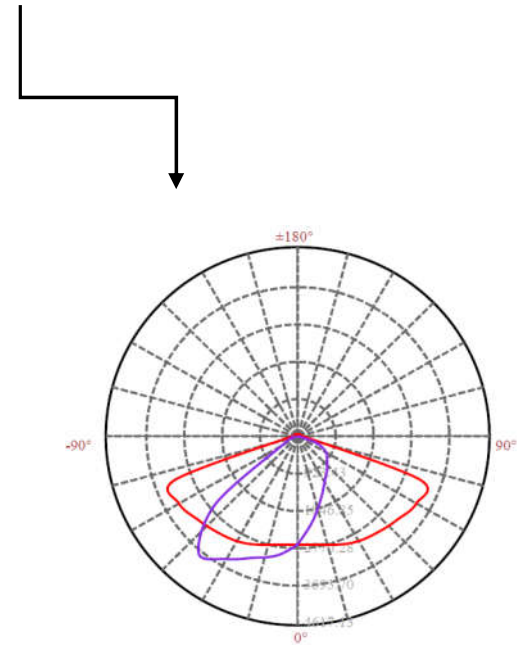
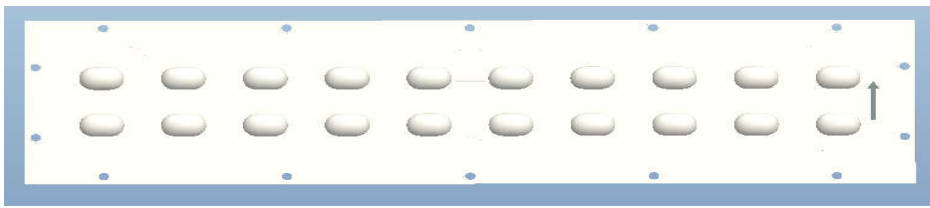
## Two optional LED Chips

### Technology

- Optional high efficiency chips(Normally we use souel 3535)
- High quality, excellent uniformity.
- Patented Formula----fluorescent powder & potting adhesive  
Better CRI, Higher Luminous Efficiency, Lower Lumens  
Depreciation.
- Easier packaging, lower cost.

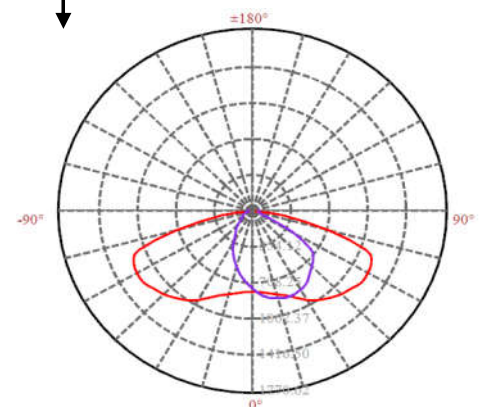
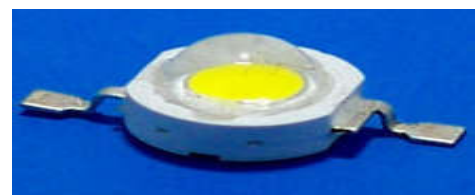
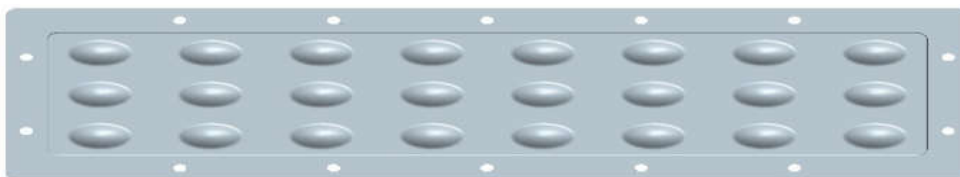


### Light Distribution Curve



- Puri imitation lumens light source(USA  
Bridgelux )

### Light Distribution Curve



# Thermal Management

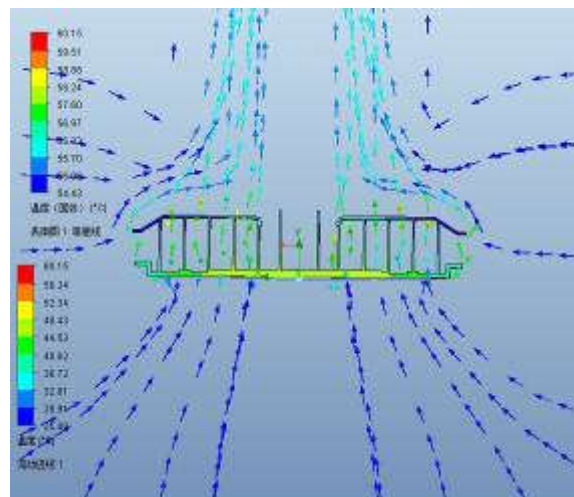
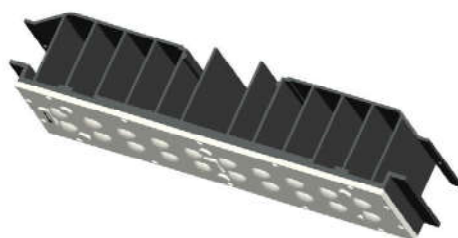
Large drain openings allow for chimney effect between the electrical and optical sections, improving cooling and thermal isolation.



Drivers are mounted in their most thermally efficient position, upside down on the door which is acting as a heat sink. This mounting position greatly improves electronics cooling.

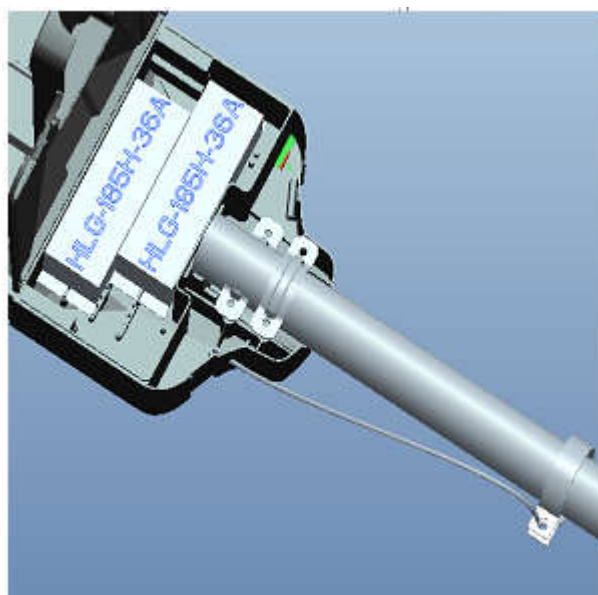
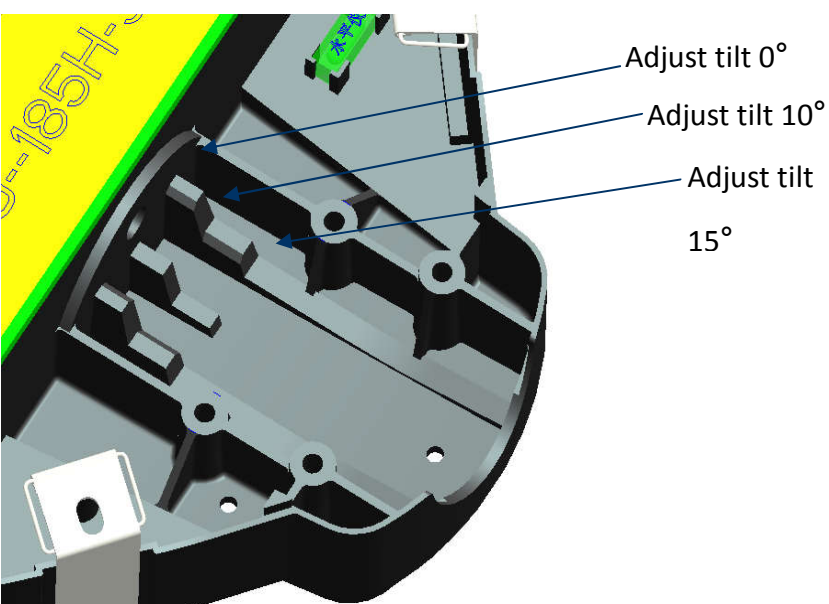
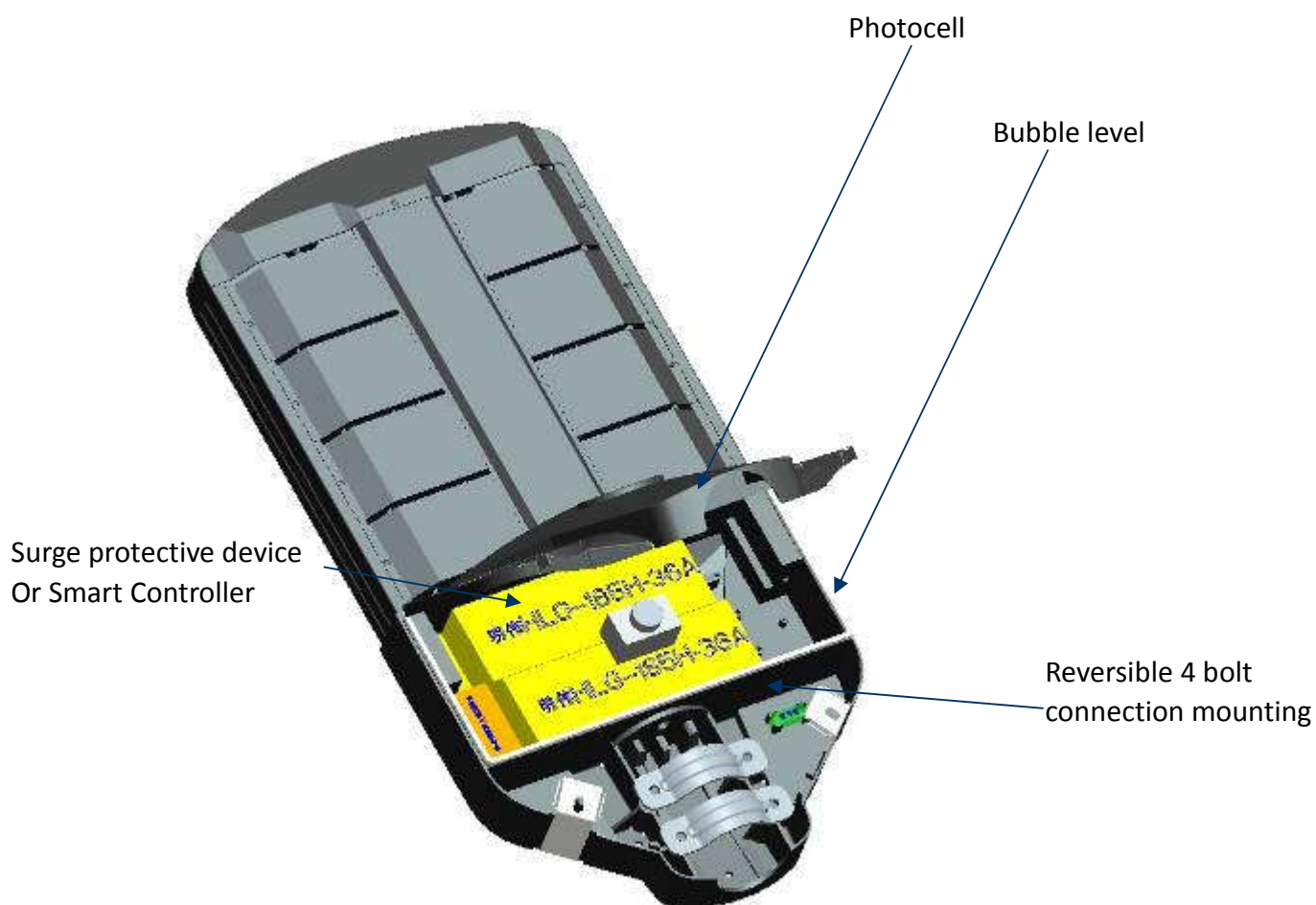


Modular design  
Each LED module is independent.  
Good quality aluminum is more thermally conductive.

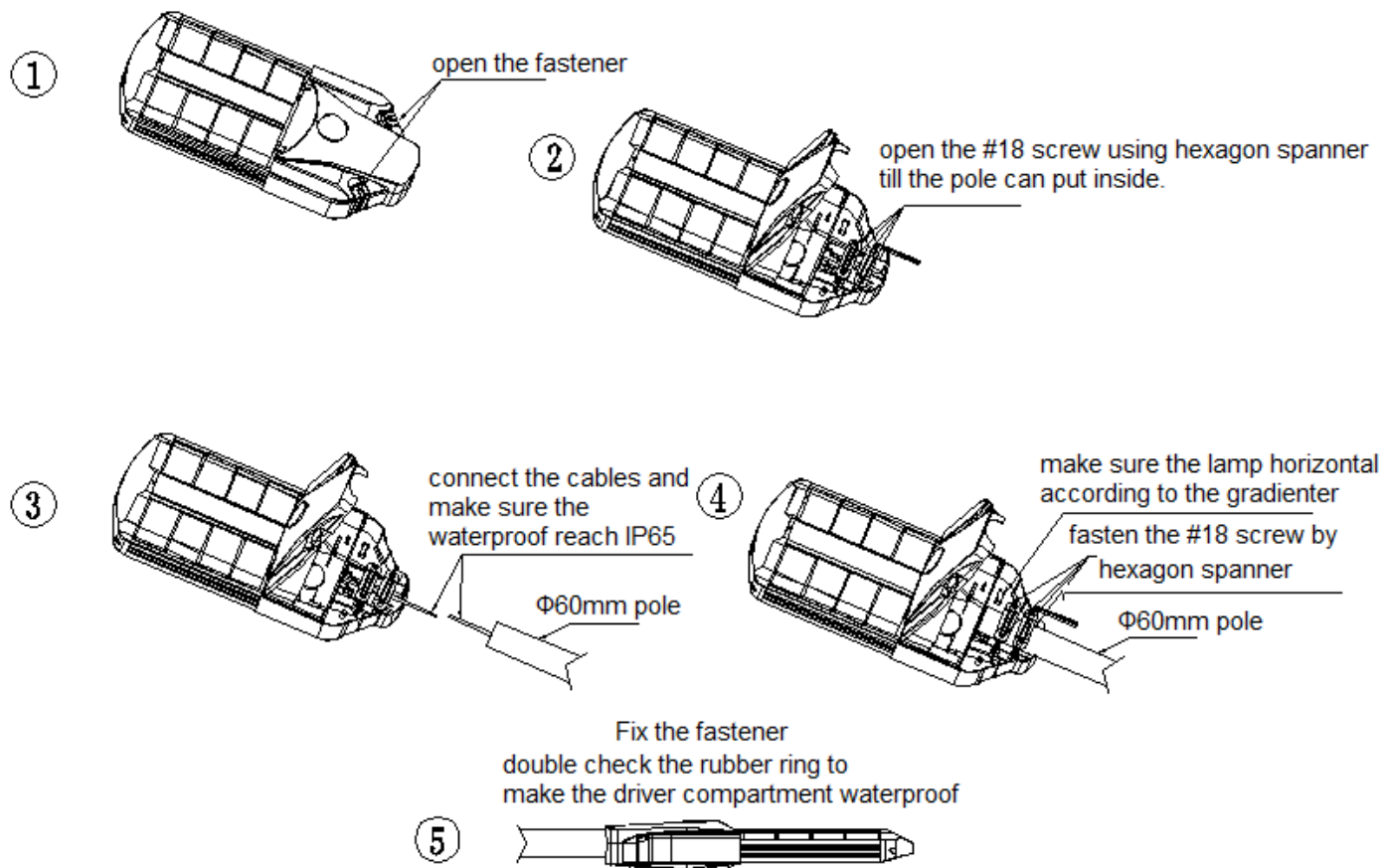




# Options and Accessories



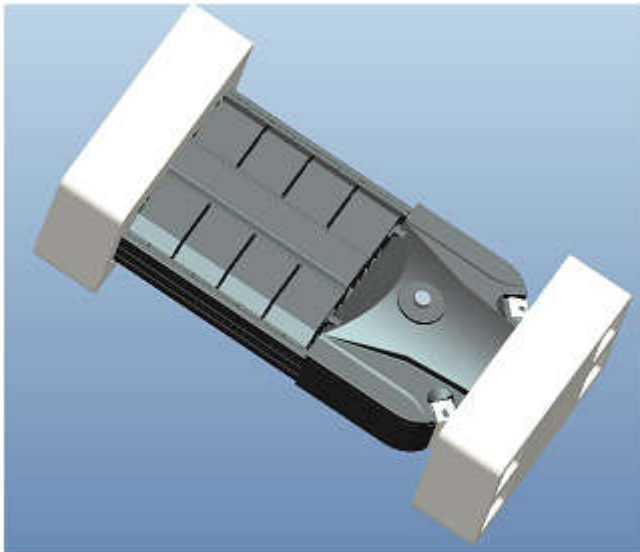
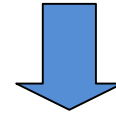
# Maintenance



**⚠ Warning:** When flexible wire is broken, please cut off the power immediately, avoid short circuit. When the outer insulation cable is broken, it should be changed by manufacture, supplier or professional electrician, lest danger occurs!



# Package Detail

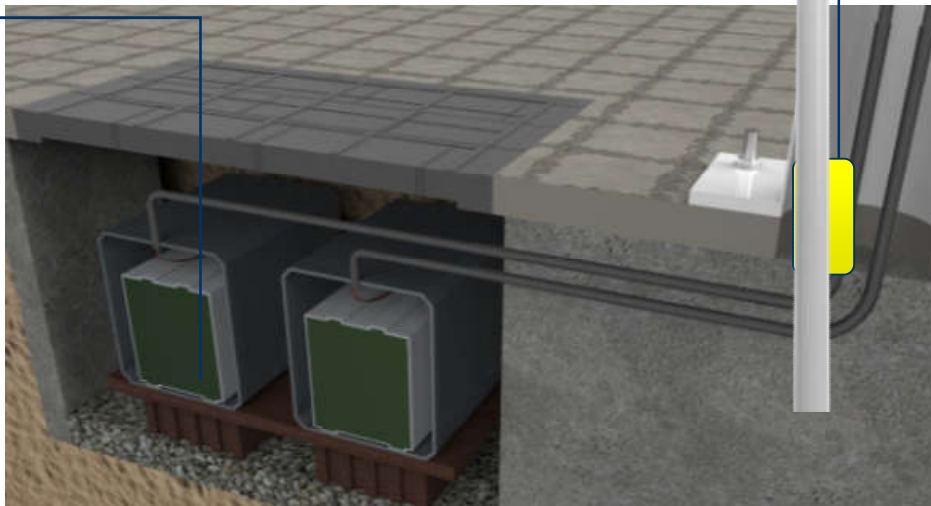
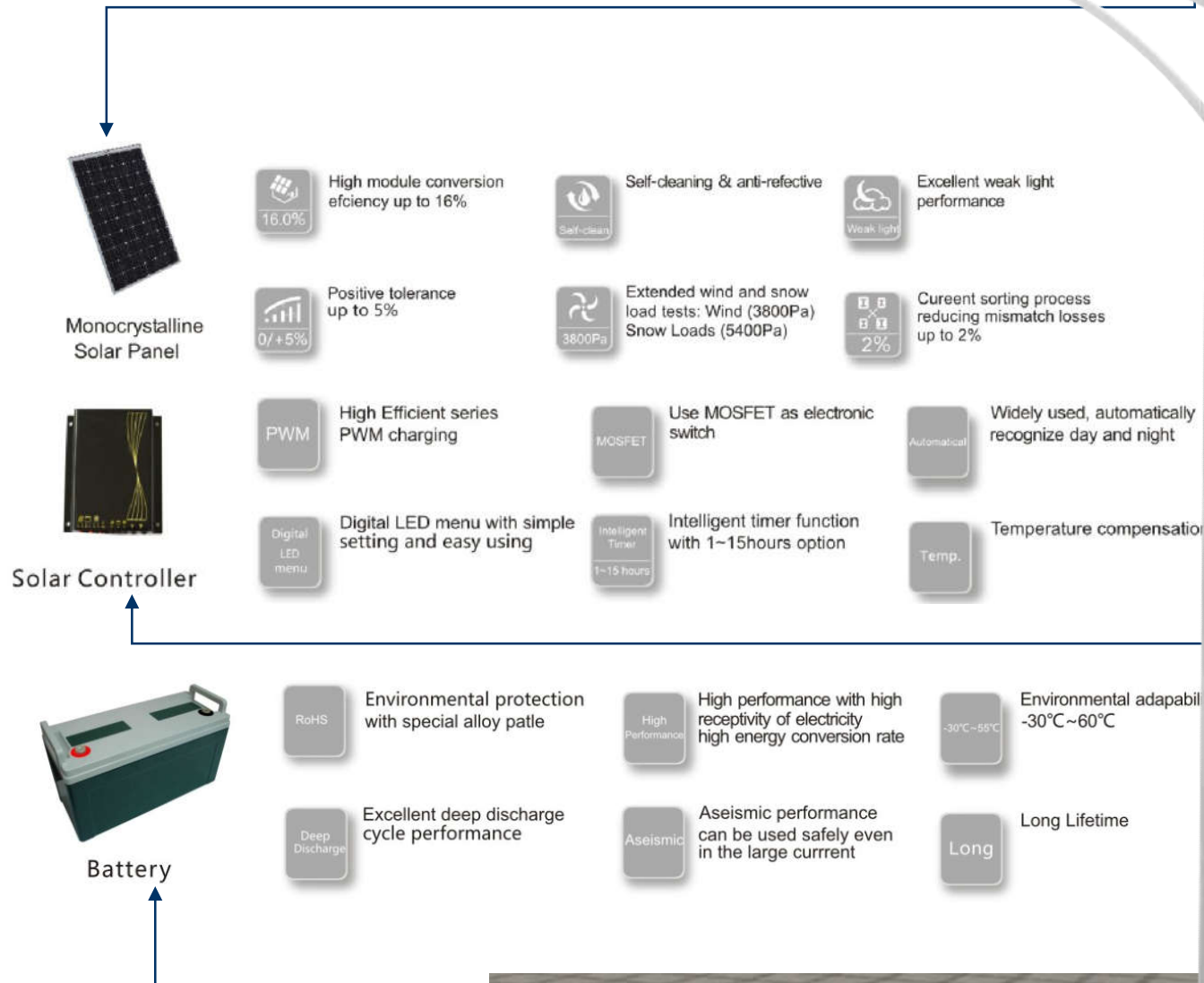


**Strengthen the package, protect the carton from being extrusion during the transport**

# Solar Power System

9

Tel:+86-760-22831803 Fax:+86-760-2211 7461 Mail: [hombo@zshongbao.com](mailto:hombo@zshongbao.com) <http://www.homboled.com>



Tel: +86-760-22831803 Fax: +86-760-22117461 Mail: [info@sems.com.cn](mailto:info@sems.com.cn)

**Mail: [hombo@zshongbao.com](mailto:hombo@zshongbao.com)**

The diagram illustrates the system architecture. At the top left, a mobile phone is shown with the number '10' next to it. A dashed arrow points from the phone to a 'Server' (a black tower unit). Below the phone, the text 'Mail: [hombo@zshongbao.com](mailto:hombo@zshongbao.com)' is displayed. A dashed arrow points from the server to a computer monitor labeled 'CMS Software'. The monitor displays a Windows-style interface with various icons and the text 'TCOMM POWER' and '2013-12-18 14:00:00'. Above the monitor, the text 'http://www.homboled.com' is shown. A dashed arrow points from the server to the monitor, labeled 'Internet'. Below the server, a dashed arrow points to a 'Power Cabinet' (a metal enclosure with its door open, showing internal components). A dashed arrow points from the power cabinet to a 'Powerline' (a series of poles with solar panels and lights). The powerline is labeled '100%', '50%', and '0%'. A dashed arrow points from the powerline back to the power cabinet.

- Lamp metering
- Real time control
- Lamp fault diagnosing
- On / off / dim schedules
- Power line fault diagnosing
- Energy saving reports
- Support video system
- 3 phase power metering
- Support environment sensors
- Work as Smart City platform



- Lamp metering
- Real time control
- Lamp fault diagnosing
- On / off / dim schedules
- Energy saving reports
- Support video system
- 3 phase power metering
- Support environment sensors
- Work as Smart City platform

- Lamp metering
- Real time control
- Lamp fault diagnosing
- On / off / dim schedules
- Energy saving reports
- Support video system
- 3 phase power metering
- Support environment sensors
- Work as Smart City platform

**Light Your City and Village  
with Good Service!**



**HOMBO Technology Public Limited Company**

Add: No. 58, Min An Road, South, Xiaolan Town, Zhongshan City,  
Guangdong Province 528415

Tel: 86-760-22831803 Fax: 86-760-22117461

Email: [hombo@zshongbao.com](mailto:hombo@zshongbao.com)

Website: [www.homboled.com](http://www.homboled.com)