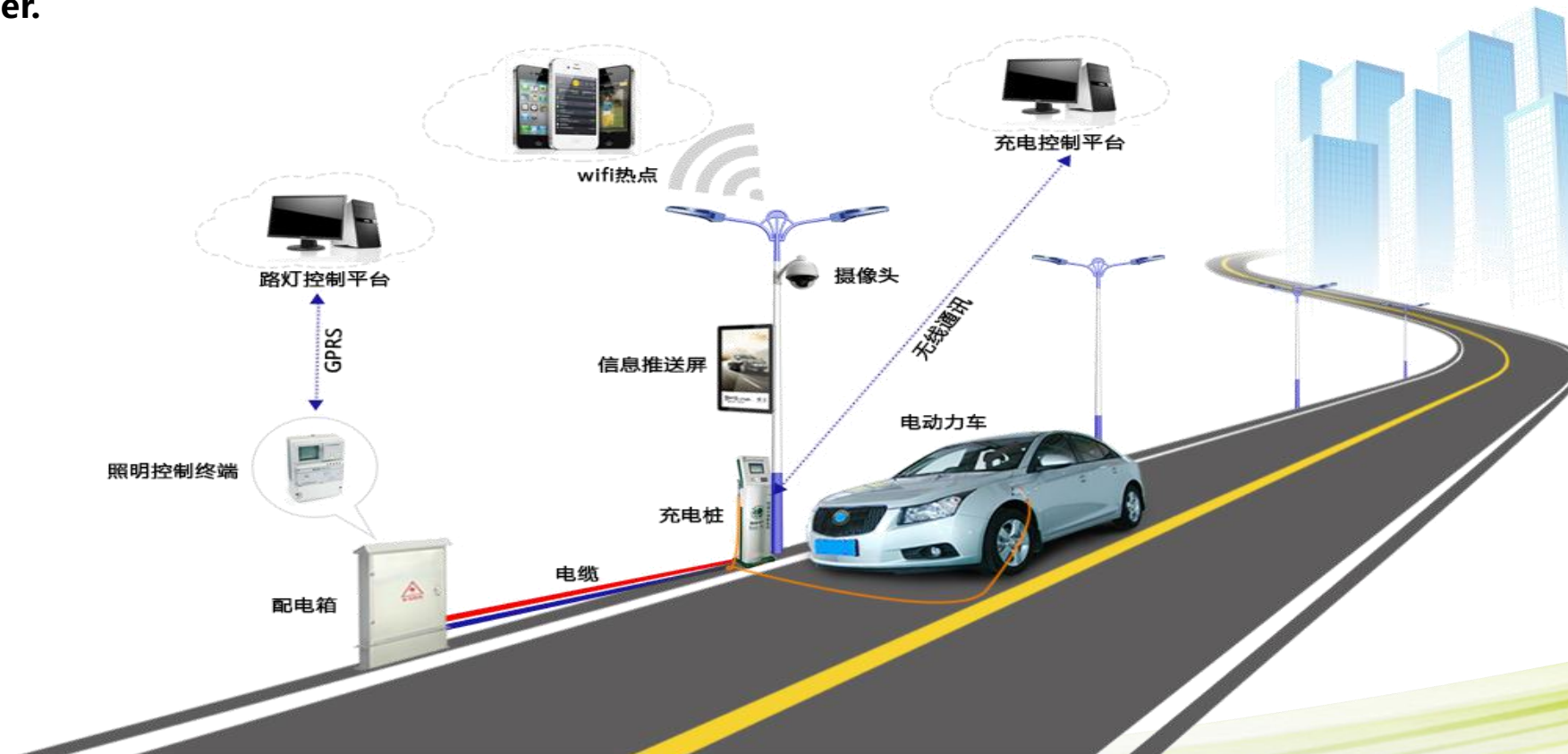


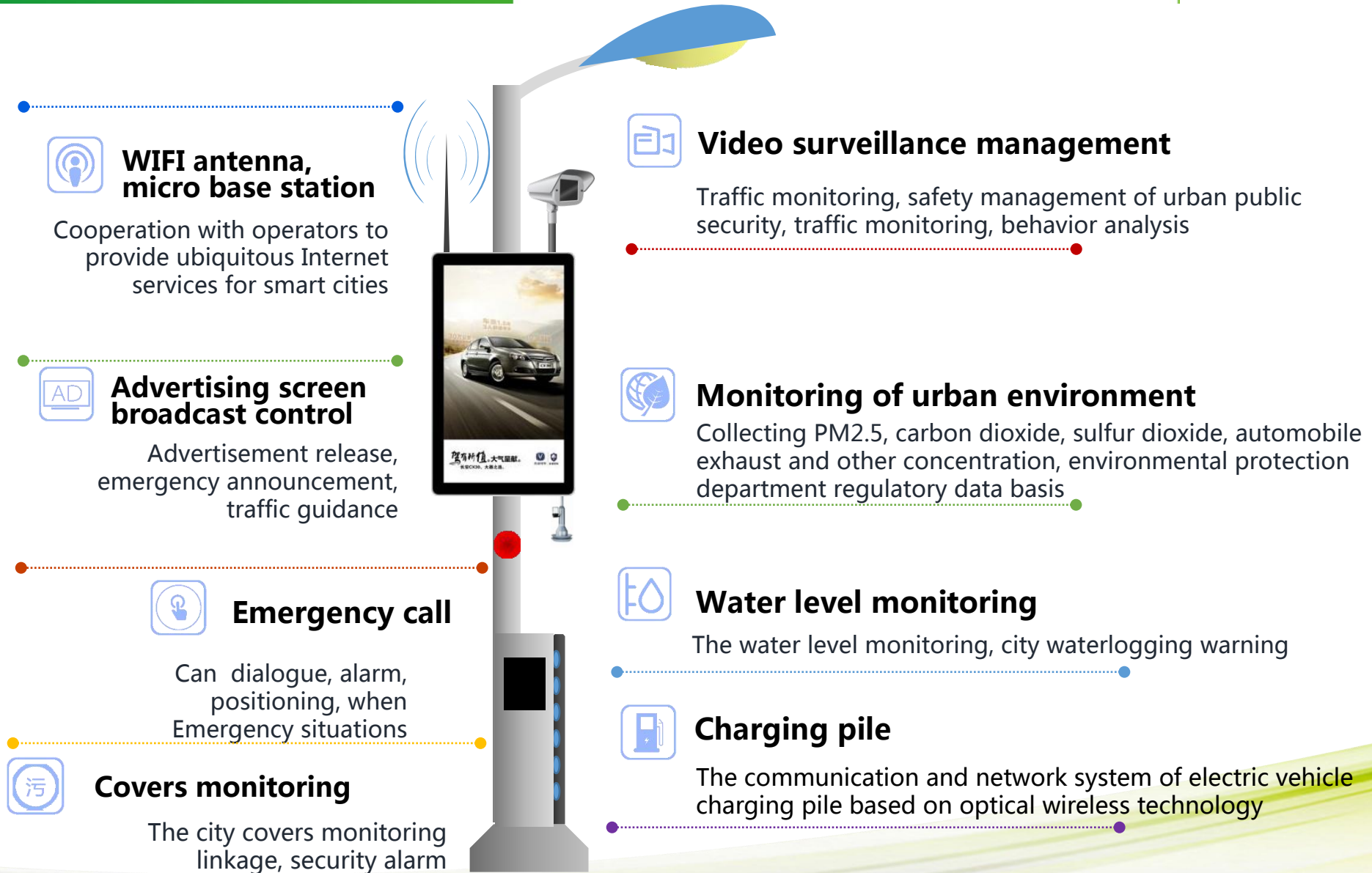
Smart City Solution Provider

Intelligent LED Street Light

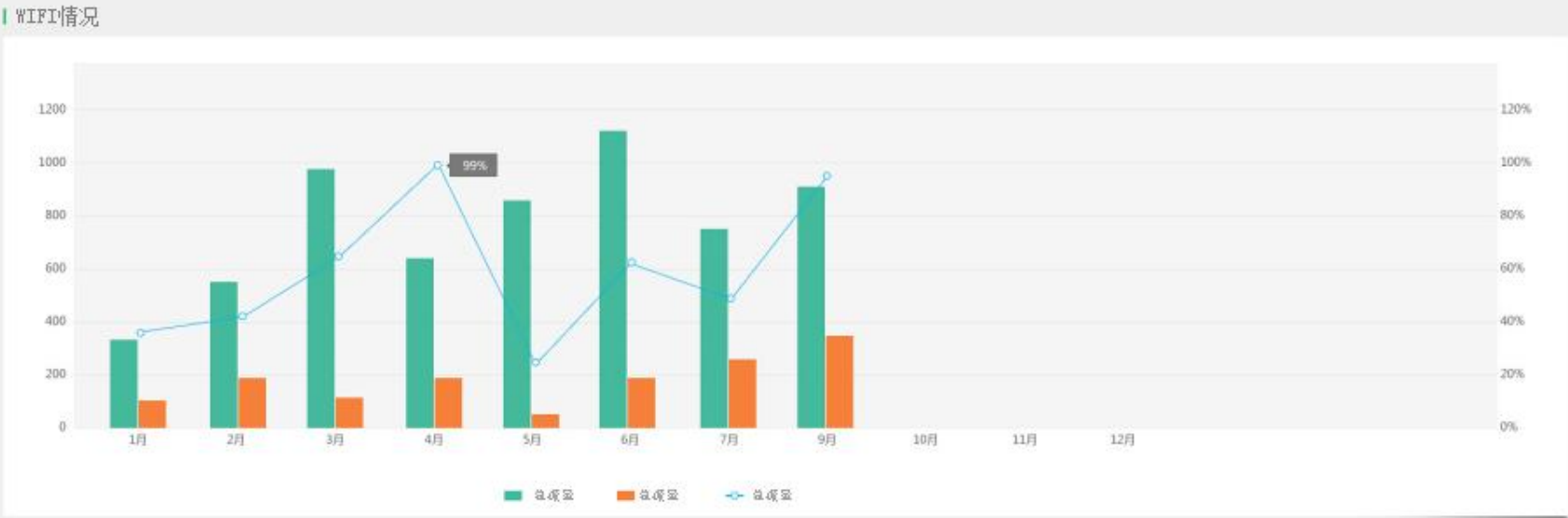


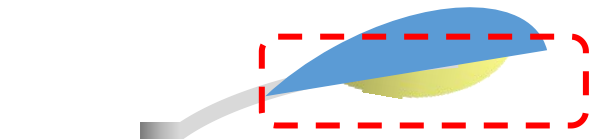
Smart City Solution is an integration of a variety of information equipment technology innovation of combined application of intelligent street lighting, WiFi antenna, Monitoring of urban environment, Video surveillance management, Advertising screen broadcast control, Emergency call and Charging pile multiple functions. Solution using modular structure design, customers can choose different function modules according to the different needs and different applications, to provide better services and infrastructure for the owners and the end user.





Intelligent LED Street Light





Through the street lamp lighting management system and the carrier control module, the street light public lighting the implementation of unified management, to achieve the lighting remote monitoring, intelligent control, energy saving and consumption reduction of the "Trinity" effect.



GIS Map



Telecontrol



Data Collect



Asset management



Mobile polling



Control strategy



Failure warning



PLC technology



Dimming



Anti-theft



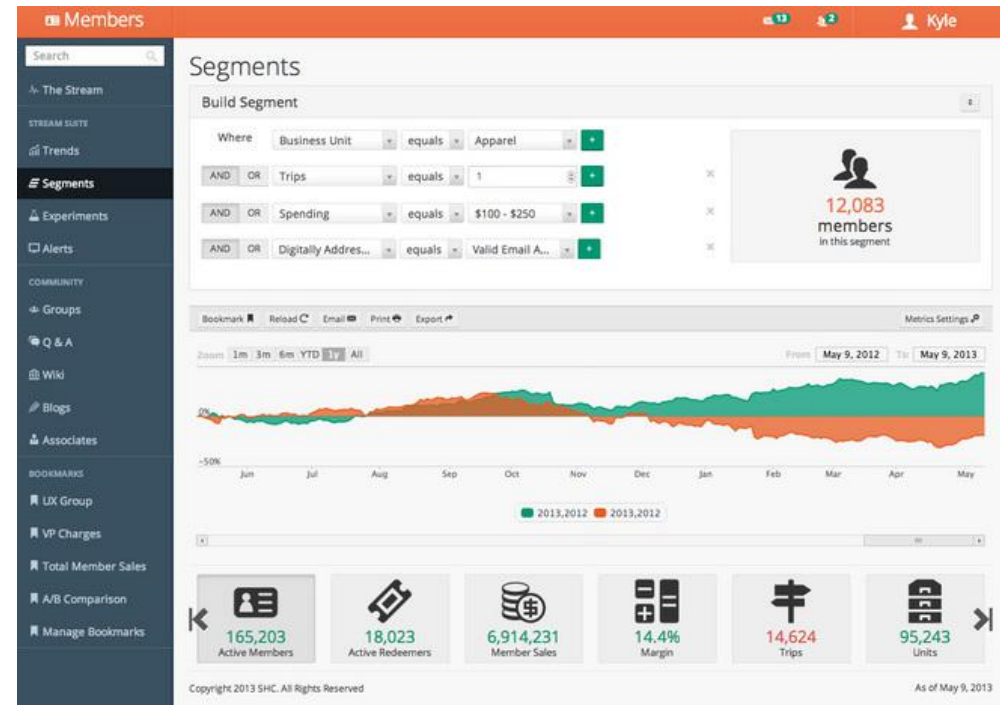
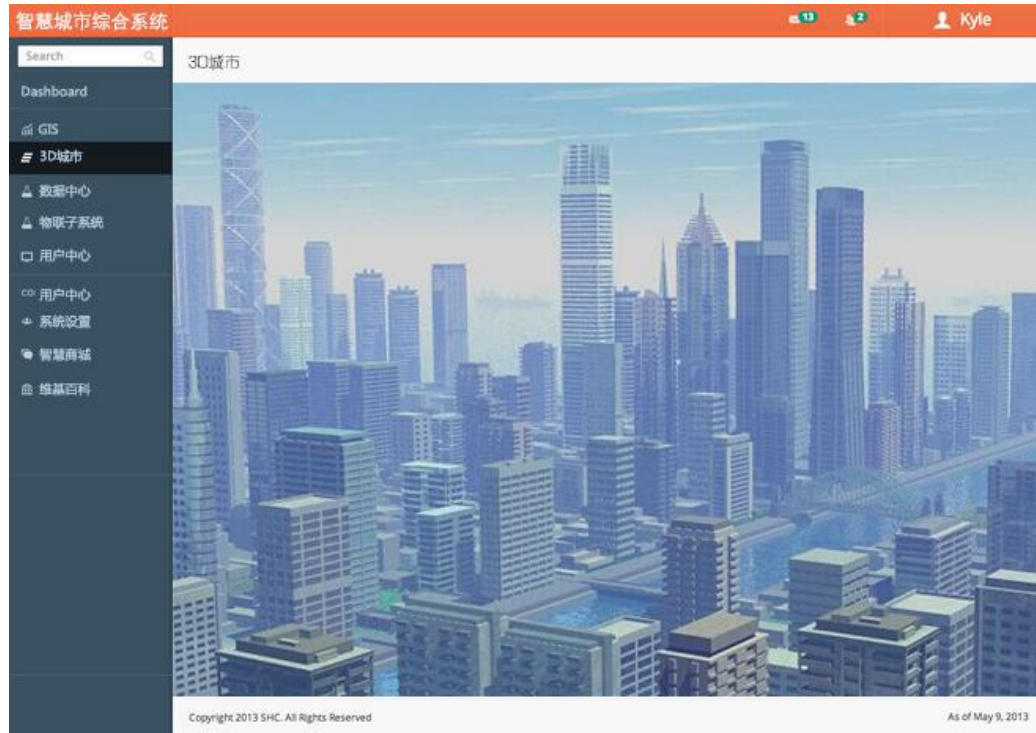
Switch control



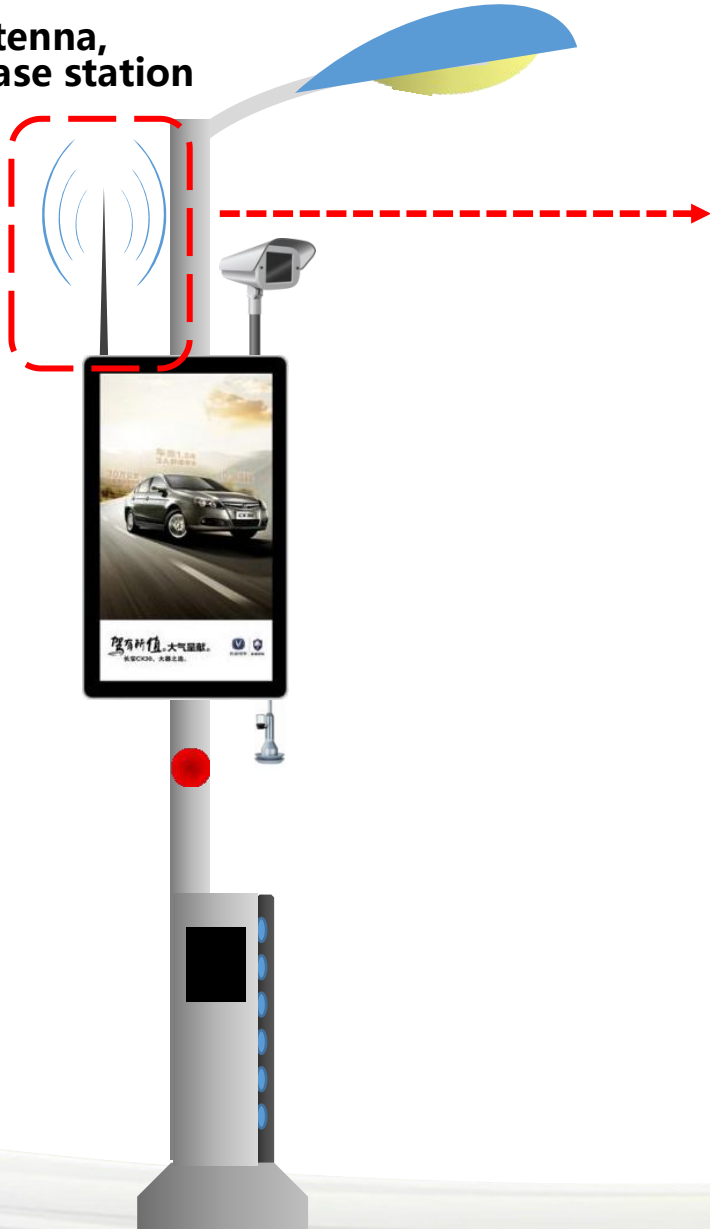
Electricity calculation

The intelligent construction of the street lamp meets the demand of the road lighting management:

- 1, the transport authorities can real-time control all lighting through remote monitoring
- 2, the lamp of the fault information can be report through the system in time, operation and maintenance department can be carried out in the shortest time to deal with the failure to ensure that the lighting to achieve safety requirements.
- 3, through the strategy of the setting, setting each time period, the brightness of the street lamp.
- 4, the record of the data also provides a basis for the future government and the management and transformation of the cut.



**WIFI antenna,
micro base station**



Profile

Public WiFi construction, is not only a full coverage of the Wi Fi. Free WiFi access, implementation included more security, Internet more secure, office more security, true so that the public rest assured that use. Through the realization of efficient wireless advertising and marketing, enhance the experience of the Internet, network coverage and easier to maintain.

Function

- Background network management
- Centralized management of WIFI equipment
- User access authentication system
- Equipment information and running status remote query
- User access behavior management system
- Advertising push system

智慧城市综合系统

13 2

Kyle

Search

GIS > WIFI

Dashboard

GIS

3D城市

数据中心

物联网系统

用户中心

用户中心

系统设置

智慧商城

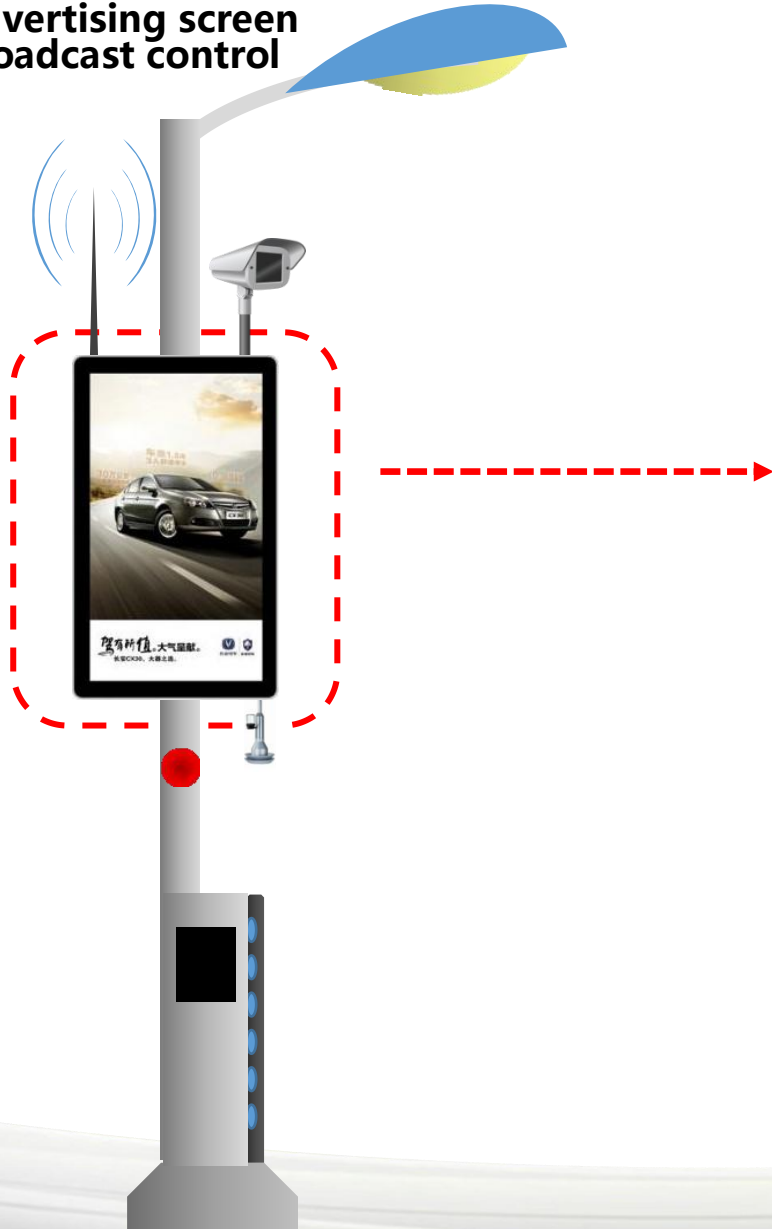
维基百科



Copyright 2013 SHC. All Rights Reserved

As of May 9, 2013

Advertising screen broadcast control



Profile

Problems faced at the same time of the rapid development of urban outdoor advertising, advertising standardization needs through a unified platform control, establish unified advertisement screen broadcasting system, the content of advertising management. Through the intelligent means to control different time advertising broadcast content, according to different regional advertising, greatly increases the advertising effect.

Function

- Ad file adaptive Publishing
- Content snapshot confirmation
- Cloud storage, cloud publishing management
- Regional grouping management
- Directional push interface

Search

Dashboard

GIS

3D城市

数据中心

物联网子系统

用户中心

用户中心

系统设置

智慧商城

维基百科

物联网子系统 > 广告管理 > 设备管理

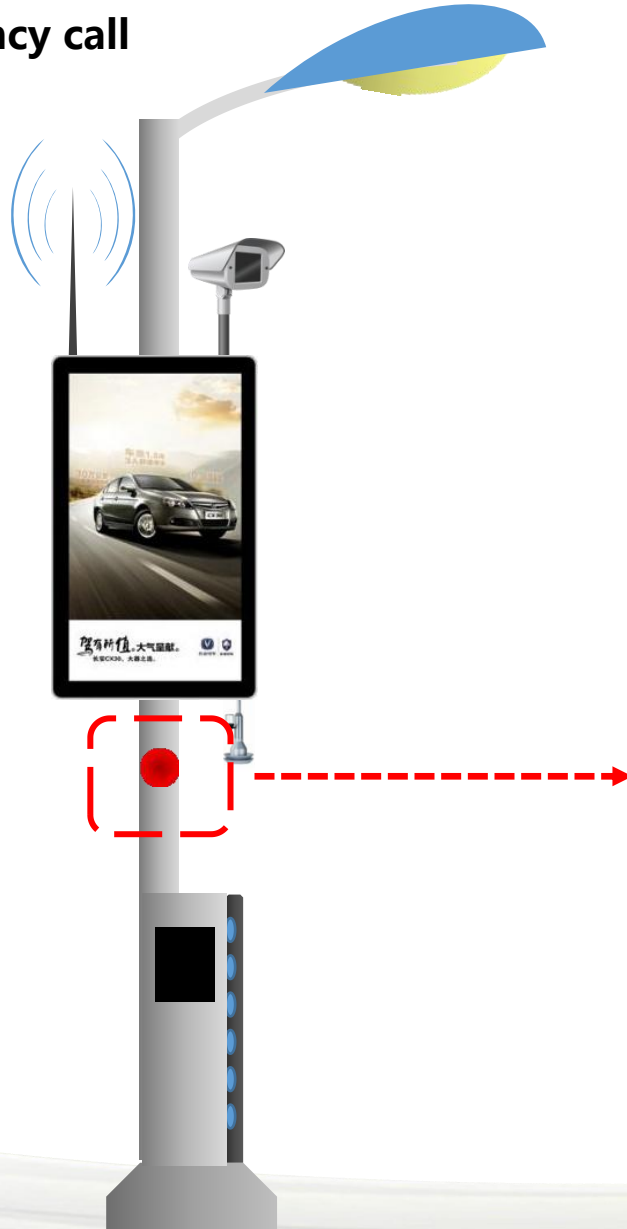
Show 10 entries

Search:

Name	Position	Office	Extn.	Start date	Salary
DXK-DHS-90	NO. 1356	0. 15	0. 15	0. 13	0. 106
PM2. 5-2	NO. 1356	0. 15	0. 128	0. 13	0. 112
PM2. 5-3	NO. 1356	0. 17	0. 125	0. 09	0. 106

Name	Position	Office	Extn.	Start date	Salary
Showing 1 to 10 of 57 entries			Previous	1	2
				3	4
				5	6
				Next	

Emergency call



Profile

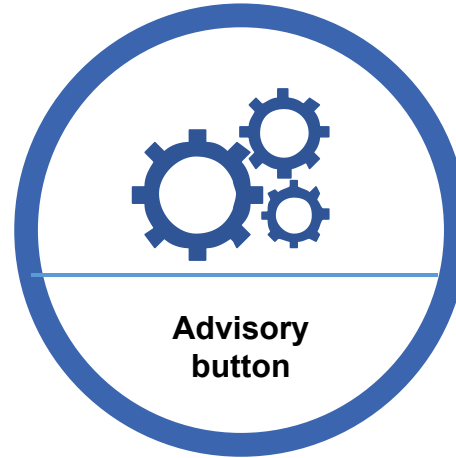
Wireless emergency call system the basic idea is to change the previous abandoned in favor of isolated individual prevention for the overall network prevention, to establish a three-dimensional, multi-level, full range, scientific 24 hours security and service network system, anti matter, Jifang, civil air defense organic combination, for people to provide a safe, comfortable, convenient working and living environment.

Function

- Video intercom call function
- Event processing platform
- Emergency location
- Event real time monitoring and control



**Emergency
button**



**Advisory
button**



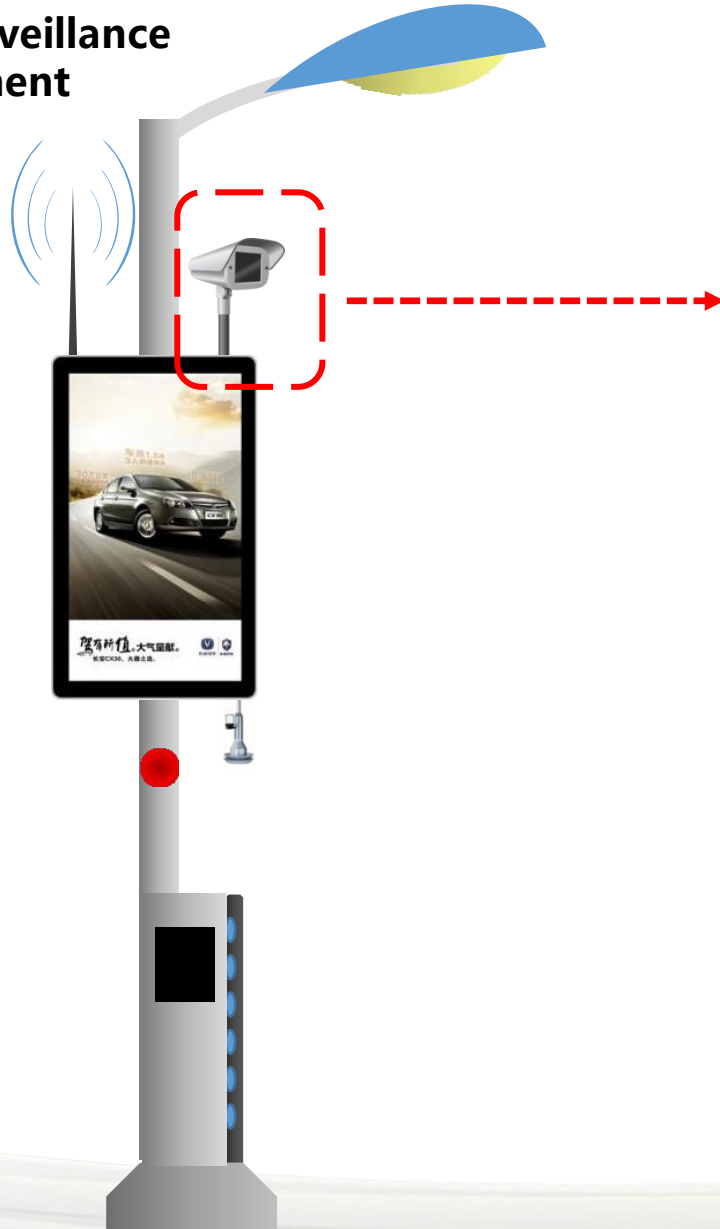
**Navigation
button**

When an emergency occurs, you can directly call the relevant departments, while calling video and other linkage, to protect public safety

Can be turned on the background management, to provide advisory services to the public.

Managers through the positioning, immediately locked abnormal, the first time to understand the police situation and processing.

Video surveillance management



Profile

Into the face recognition, license plate recognition and intelligent analysis technology, we can realize the intelligent video processing. At the same time video surveillance more as the extension of the other subsystems, and the wisdom of the street lamp, intelligent well cover, garbage cans and other municipal facilities system do with monitoring and management, and emergency call system with, through video scheduling, to facilitate the understanding of the site conditions. Each subsystem can fight in coordination, the significance of urban management major.

Function

- Real time image on demand
- Remote control
- Storage and backup
- Retrieval and playback of historical images
- Alarm management
- action with alarm
- Network and equipment management
- Log management

智慧城市综合系统

13
2
Kyle

Search

Dashboard

GIS

3D城市

数据中心

物联网系统

用户中心

用户中心

系统设置

智慧商城

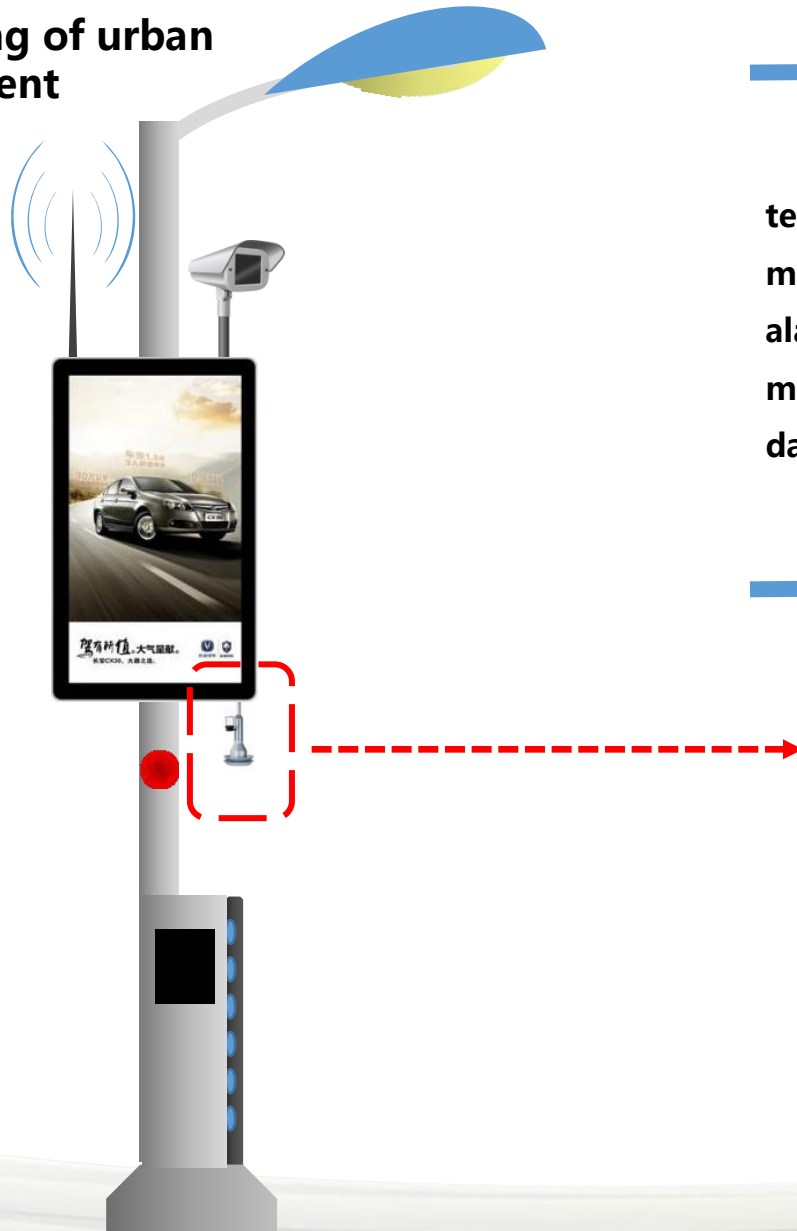
维基百科

GIS

Copyright 2013 SHC. All Rights Reserved

As of May 9, 2013

Monitoring of urban environment



Profile

Through the installation of multiple nodes monitor collected urban environment temperature, humidity, PM2.5, PM10, illumination, wind direction, wind, water monitoring, to realize intelligent monitor of the urban environment and weather, pre alarm lamp with multiple functions. And as the LED intelligent broadcast control management subsystem, intelligent traffic management subsystem and other data, data linkage.

Function

- Urban environmental parameter collection
- Status real time monitoring of acquisition equipment
- Equipment file management
- Monitoring and early warning, alarm function
- System linkage interface

智慧城市综合系统

13

2

Kyle

Search

Dashboard

GIS

3D城市

数据中心

物联网系统

用户中心

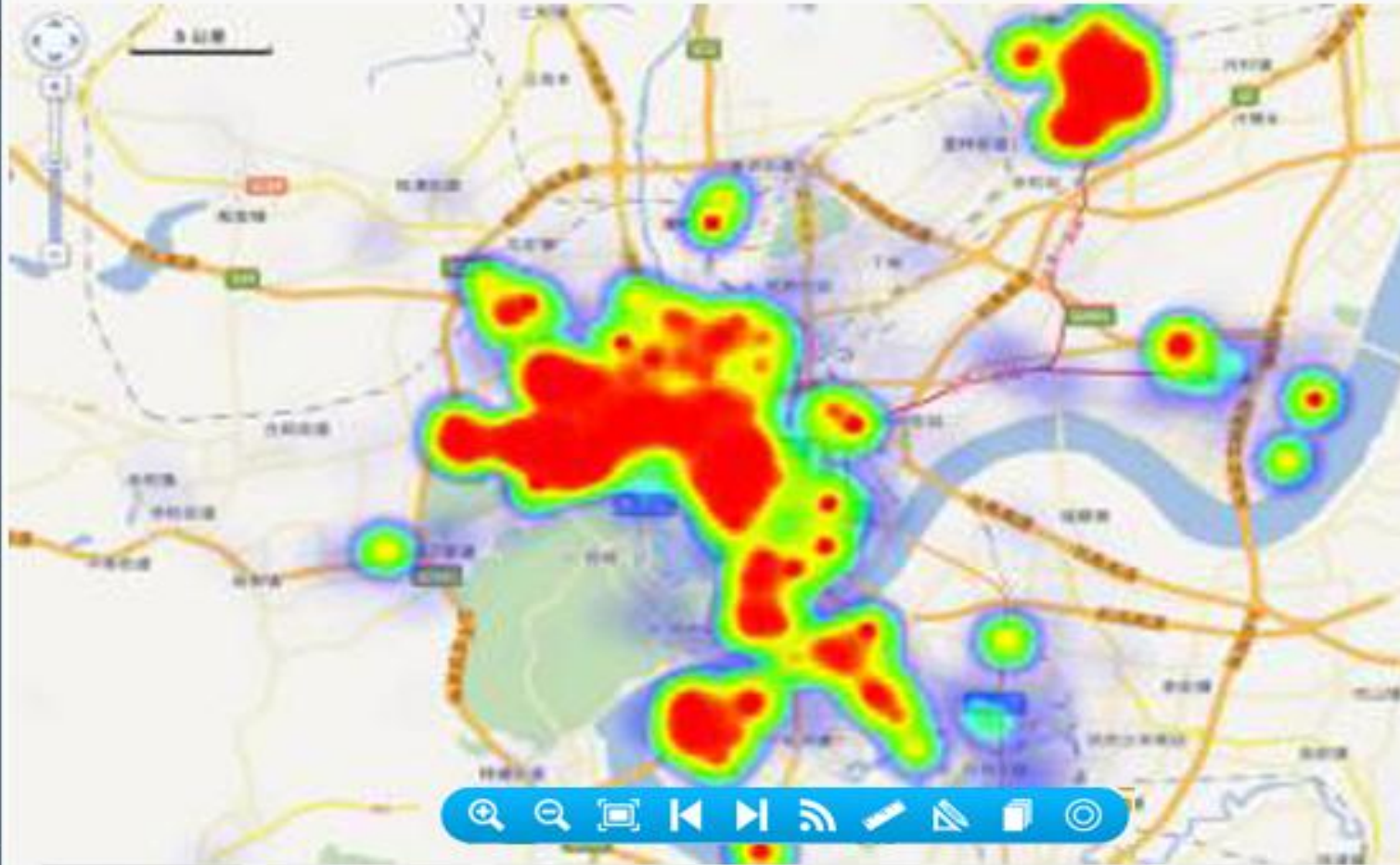
用户中心

系统设置

智慧商城

维基百科

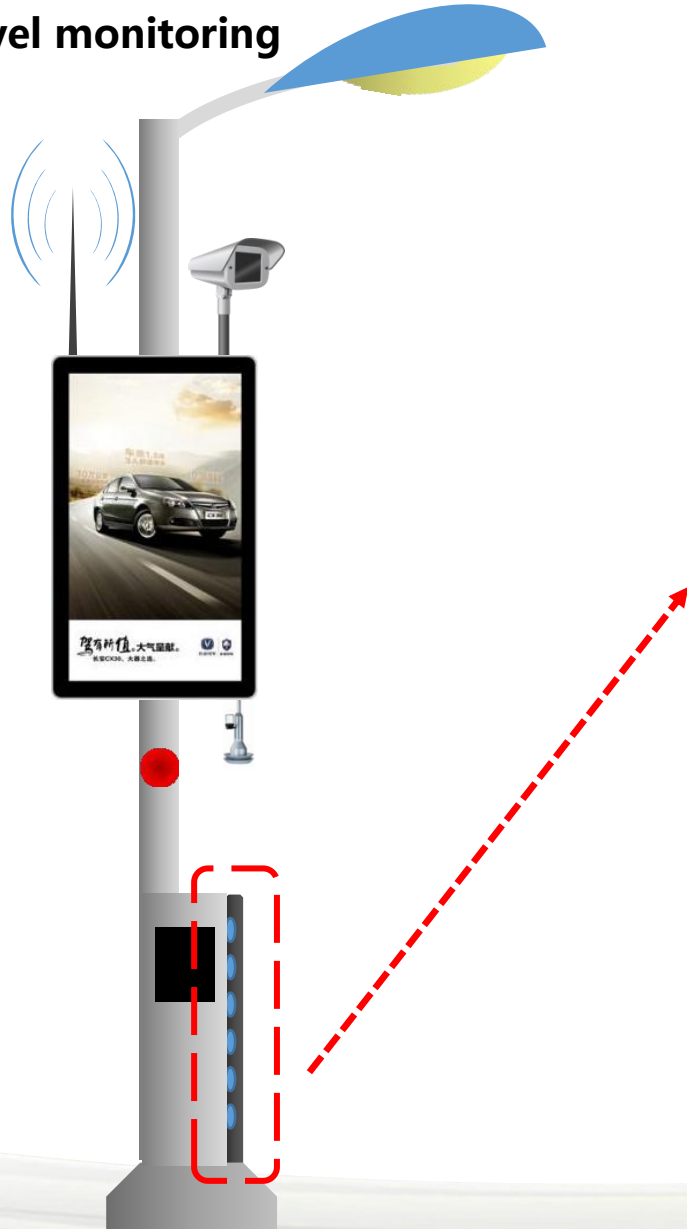
GIS > PM2.5



Copyright 2013 SHC. All Rights Reserved

As of May 9, 2013

Water level monitoring



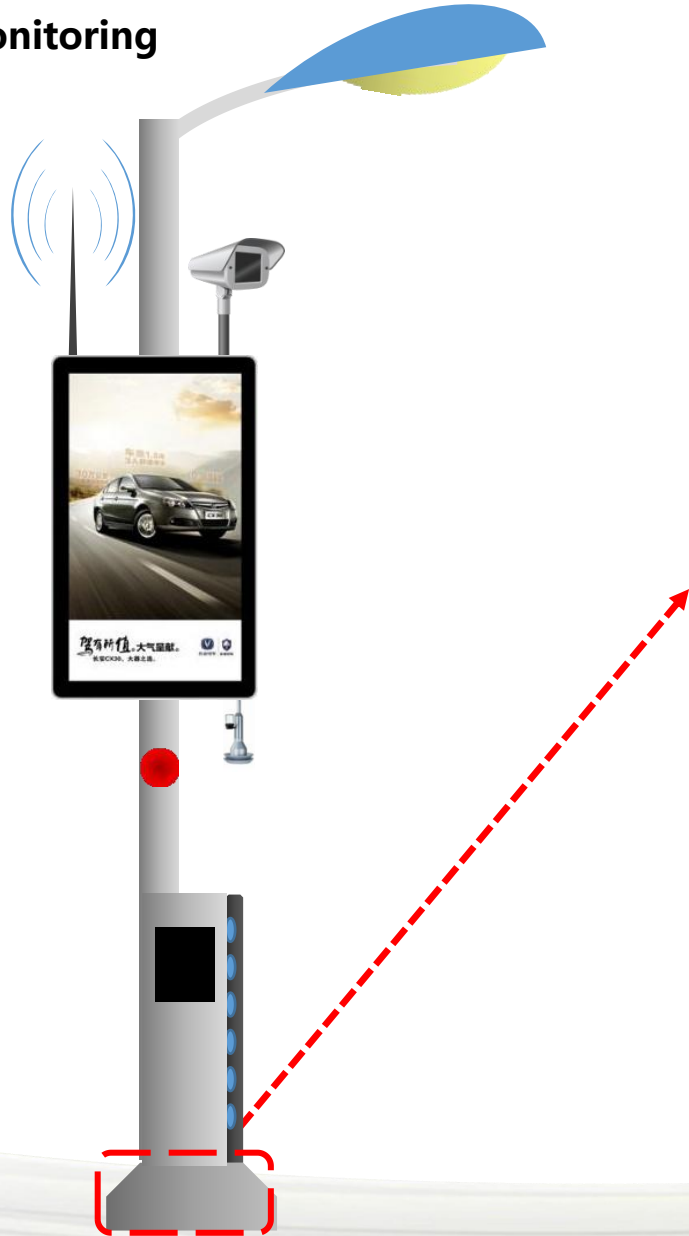
Profile

Intelligent street lamp management system and of the city street planning and design, engineering construction, routine inspection, maintenance and management of network, refinement, standardization, daily management. In street lighting intelligent lighting system based innovation, integrated applications. Smart lighting system is composed of system platform and software front-end hardware devices, in wisdom lighting through the PLC power line carrier communication technology and GPRS / CDMA wireless communication technology, street lighting facilities management, fault alarm, power monitoring and control of street lamps, and other functions.

Function

- Data monitoring and data collection
- Data analysis and processing
- remote control
- Data analysis information processing
- Alarm management
- Hierarchical rights management
- Report function

Covers monitoring



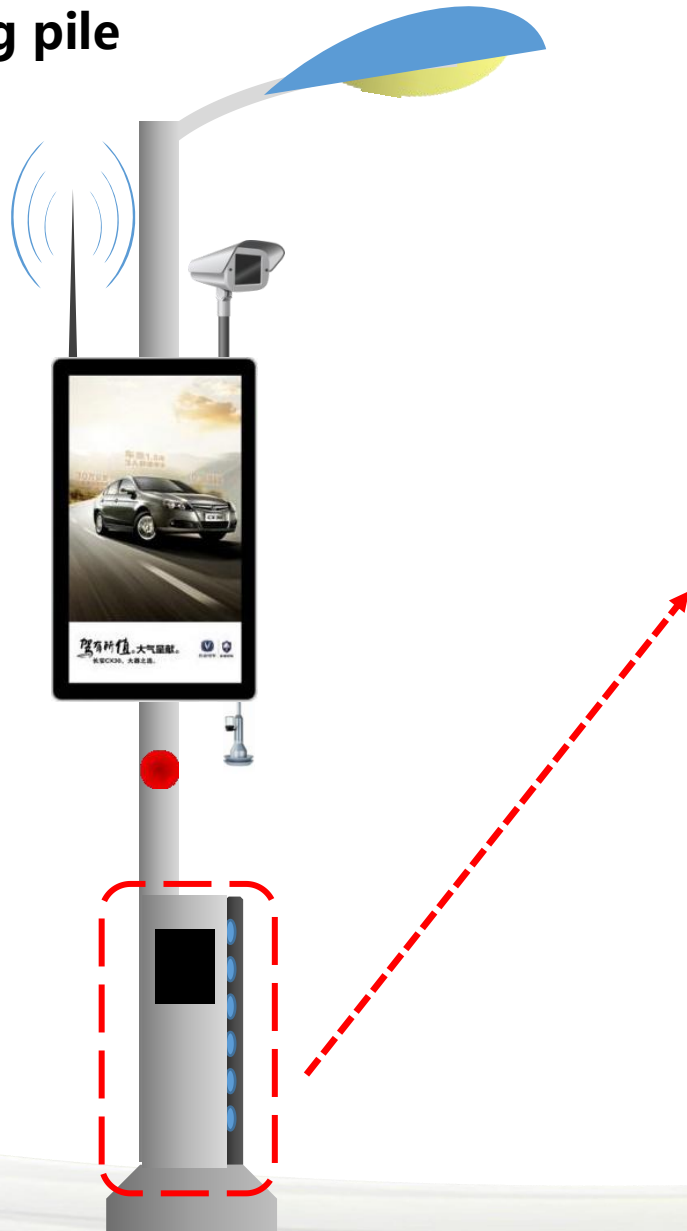
Profile

Manhole cover facilities through signal detection, video recognition, location tracking, and other place to realize intelligent management, intelligent anti-theft, PC and mobile terminal synchronous receiving known as the facility to implement on-line monitoring and exception information, through the manhole cover information management can timely through early warning found covers issues, active push send warning information and quickly solve problems manhole cover is lost.

Function

- Covers asset management
- Location monitoring
- Anti theft supervision
- action with alarm
- Authentication setting

Charging pile

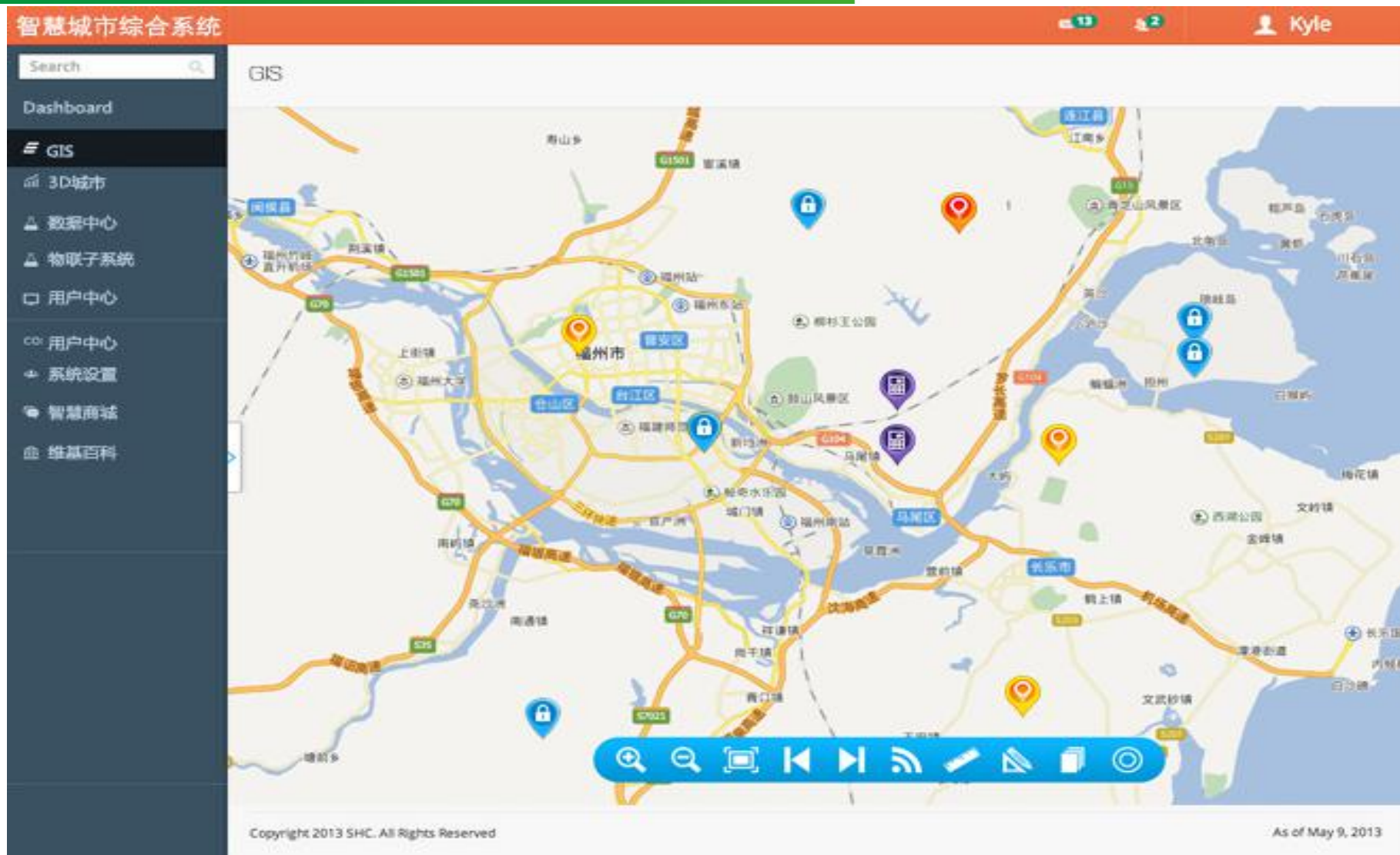


Profile

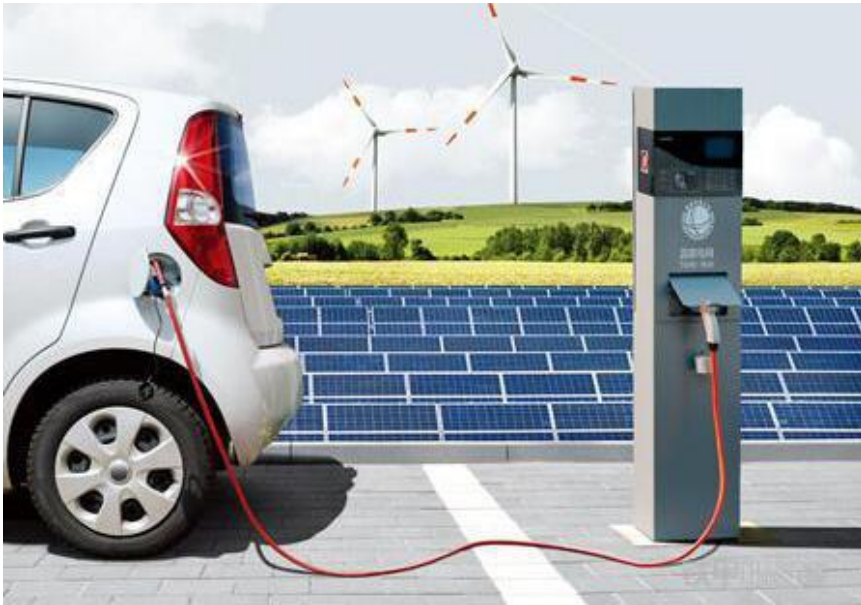
Led municipal street lighting and electric vehicle charging pile of integration design scheme based on can be effective use of municipal street reconstruction after save out of distribution capacity and installation of DC charging pile. Provides an interface for electric vehicle charging and discharging, has a protective, monitoring, control, communication, measurement, easy to master station system to realize the remote monitoring and control of the vehicle charging and discharging state of street lamps and electric.

Function

- Charging pile asset management
- Location monitoring
- Anti theft supervision
- Provide man-machine interactive operation; provide DC, AC charging interface.
- Command and control, to control the signal switch charger, charger charger start and stop, acquiring state information;
- Get the battery type, single voltage, residual capacity, temperature, alarm and other information;
- With voice prompt function; with the function of credit card;



Charging management system to solve the contradiction between the dispersion characteristics and charging pile layout centralized management needs, its main functions include charge card management, real-time monitoring, alarm processing and transaction data recording and transmission system. Comprehensive coverage of operators, business hall, all the business scope of the filling station and the system of consumers. Different manufacturers of charging pile equipment can perfectly compatible, allowing operators without replacement of obsolete equipment. The data exchange and charging pile equipment using power line carrier technology, realize the Dentsu where charging pile can be installed where the deployment, for businesses to save a lot of cost of wiring system using cloud services platform., safe and reliable data storage, remote monitoring through intelligent mobile terminal, ensure that the operators have no worries!





	Simple	Standard	Deluxe	
Configuration				
LED Street Light	•	•	•	
Pole	•	•	•	
Manager System	•	•	•	
Optional				
WIFI antenna, micro base station		○	•	
Advertising screen broadcast control		○	•	
Emergency call		○	•	
Video surveillance management		○	•	
Monitoring of urban environment		○	•	
Water level monitoring		○	•	
Covers monitoring		○	•	
Charging pile		○	•	



HOMBO Technology Public Limited Company

Add: No.58, Min'An Road, South, Xiaolan Town, Zhongshan City

Tel: +86-760-22831803 Fax: +86-760-22117461

Mail: hombo@zshongbao.com Web: www.homboled.com

